

CHelsea HIGH SCHOOL COMMENCEMENT EXERCISES were held Sunday at 3 p.m. in the high school gymnasium before a capacity crowd of family and friends. The 148 members of the class received their diplomas from

board of education members Anne Comeau, Joe Redding, John Eisenbeiser, Ron Satterthwaite, Jane Diesing, and Dick McCalla. The event included speeches by seniors Amy Mitchell and Jeff Holzhausen, as well as a retrospec-

tive slide show featuring slides of class members throughout their school careers. The high school choir and orchestra also performed.

**QUOTE**  
And I have seen the eternal Footman hold my coat and snicker, and in short, I was afraid.  
—T. S. Elliot

# The Chelsea Standard

50¢  
per copy

ONE HUNDRED-TWENTY-SECOND YEAR—No. 2

CHELSEA, MICHIGAN, WEDNESDAY, JUNE 3, 1992

22 Pages This Week Supplement



1992 RETIREES from the Chelsea School District were honored for their service at a special awards luncheon last Wednesday, May 27. From left are Beach school teacher Burt Kruse (1982), North school teacher Bernice Packard (1962), Beach school teacher Alice Steinbach (1965), and Beach school teacher David Knsely (1962). Not pictured is Beach counselor Jean Mann Purdy (1968).

## School District Voters Will Decide Millages, Elect Two Board Members

Chelsea School District voters will decide three millage propositions and choose two Board of Education members in the annual elections next Monday, June 8 at Beach Middle school.

On the ballot will be proposals for the renewal of the current operating millage of 26.02 mills, an increase of 1.95 mills for operating purposes, and a 1.45 mill request to fund special education in the county by the Washtenaw Intermediate School District.

The local increase translates to an additional \$97.50 per year per home with a state equalized value of \$50,000 (theoretically a market value of \$106,000).

Candidates for school board include incumbents Joe Redding and John Eisenbeiser, and challenger Domingo Hermosillo.

Separate stories about the WISD millage and the school board candidates appear elsewhere in this issue.

The local millage proposals are for one-year only, a departure from recent practice of seeking three-year terms. The board has cited the uncertainty of state funding as the reason for shorter proposal.

The renewal will essentially let the district operate the schools next year.

Without it, the district will be out of money by November as it could only operate on its permanent millage of 9.75.

The 1.95 mill increase would allow the district to maintain its current program. No major projects or programs will be added. Without the increase, the board of education plans to implement about \$634,000 in cuts across the board next year.

Those well-publicized cuts include:

- \$74,500 in staff and programs at Chelsea High school.
- \$72,000 in staff and programs at Beach Middle school.
- \$176,000 in staff and programs at North and South Elementary schools.
- \$48,000 in special education.
- \$48,221 in substance abuse programs.
- \$18,000 in community education department staff and supplies.
- \$69,000 in administrative services.
- \$20,000 in custodial and maintenance services.
- \$90,000 in transportation (bus purchases and field trips).
- \$64,300 in extra-curricular programs.

The cuts include lay-offs of two media aides, two counselors, including the substance abuse counselor, a music teacher, and a high school English teacher. Other

lay-offs will be avoided by shuffling staff members around to fill vacancies created by retirements. Without the retirements, at least three other staff members would have been laid off. The cuts would also make curriculum director Laurie Bissell and athletic director Wayne Welton half-time administrators.

A number of popular extra-curricular programs would be cut, including 7-9 grade athletics, Washington Street Show Choir, students newspapers, the annual high school musical, and the middle school yearbook.

"A lot of people have worked for a lot of years to make the Chelsea School District the outstanding district that it is," said board president Anne Comeau.

"Because of circumstances forced on us by the state, we are forced to grapple with issues that are beyond our control. In our effort to maintain the standards of our district, we are asking people to support it financially. We understand it will be a hardship and is difficult. But education of children is one of the most important things we do and there comes the time when we have to pay for it. This is not the board's fault or the administration's fault."

(Continued on page four)

## Landfill Dispute May Be Decided by Arbitrator

Chelsea Village Council has voted to have its landfill dispute with Sylvan, Lima, Lyndon, and Dexter townships decided by an arbitrator.

After an executive session during last Tuesday's council meeting, in which the matter was discussed with attorney Matt Zimmerman of Grand Rapids, council voted to approach the townships about going to arbitration as a way to end negotiations which have been going on for about two years.

The village and townships have been trying to decide how to divide the costs of closing out the old cell at the village landfill on Werkner Rd., which could also include long-term monitoring and contamination clean-up. Total accumulated costs, according to village manager Jack Myers, are \$737,552 through February.

Although details have not been publicly revealed, the sides have apparently reached a tentative agreement on how to split the accumulated costs. What they haven't figured out is how to split long-term costs, which could be extensive depending on what kind of agreement the village works out with the Department of Natural Resources concerning monitoring and clean-up. It's likely long-term costs would go on for 30 years.

"We didn't get any response from our last offer," Myers said.

"We'd just like to get this wrapped up as soon as possible."

Sylvan Township Supervisor Don Schoenberg acknowledged the townships had not responded, but that he was trying to get the township supervisors together to discuss the matter.

"I hope that the townships and

village could get together again before it goes to arbitration," Schoenberg said. He speculated the arbitration move is based on frustration and he did not see it as a hostile move.

## Cashman Narrowly Appointed to Council Amid Controversy

Brian Cashman, a runner-up for village council in the March elections, was appointed last Tuesday to fill out the remaining nine months of Allen Anderson's term. Anderson recently moved out of the state.

The 3-2 council decision was contested by trustee Gary Bentley, who said the first runner-up in the elections should be appointed. That was long-time resident Ishmael Picklesimer, Jr., who was in the audience and accused Steele of playing politics.

"I don't even know Cashman, so it's nothing personal against him," Bentley said after the meeting.

"I just think that if we're going to go back to a slate of defeated candidates, that the person with the most votes should be nominated. I don't necessarily agree that we should go that route anyway."

Late last week, Picklesimer told The Standard that he was humiliated by Steele's treatment of him, particularly when Steele ordered him to "sit down," and didn't allow him to

Both Myers and Schoenberg were uncertain as to how arbitration would work or what it might cost. The village could use the American Arbitration Association or possibly a retired circuit court judge.

## Village Millage Rate Unchanged

Millage rate for Village of Chelsea property owners will not be changed this year.

Village operating millage will remain at 10.94 mills. That will create revenues of \$645,513. Manager Jack Myers said the 1992-93 budget was based on revenues of \$900,000.

Village council authorized the rate at their meeting last Tuesday. Because the rate did not change, a public hearing was not required.

(Continued on page six)

## Three Candidates Seek Two School Board Seats

Three candidates are seeking two seats on the Chelsea Board of Education in next Monday's annual school elections.

Incumbents John Eisenbeiser and Joe Redding face a challenge from Domingo Hermosillo for a four-year term.

Eisenbeiser and Redding may be the two most conservative members of the board. They are the only two trustees who voted against last September's \$23 million bond issue for school improvements, which was rejected by nearly a 2-1 margin.

Eisenbeiser, owner of a landscape materials business, is a Chelsea native. He is seeking his second term. Redding, supervisor of an engineering group for Ford Motor Co., is seeking his third term, although he has served nine years. He was initially appointed to the board to fill the remaining year of a term of a board member who moved out of the area.

When Eisenbeiser first ran, he still had children in the school district. They have since graduated.

"At first I just wanted to see if I could serve the public in some way," Eisenbeiser said.

"Some of the things I've talked about I think are the desires of a lot of

people in this district. I'd like to do what I can to make some changes."

At the top of his list of changes is improved communication between the board and general public. He admits he is more interested in "the attitudes of the people" than the facilities issue.

"We really need to build some trust between the board and district residents," Eisenbeiser said.

"We have our formal process for communication, but I think it stymies a lot of people. We need to make people feel they have some part in the decision-making process. Personally, I think our communications have deteriorated, but a lot of that has to do with changes in the people. They want more answers and don't automatically trust the board of education or the administration."

Eisenbeiser still wants the district to go forward with a bond issue proposal for building, but limit it to a new elementary school and renovation and update work at North and South Elementary schools.

"There's little question we need elementary space," he said.

"I'd like to get something in motion in the next year or so."

Redding has two children in Chelsea schools, twins Amy and Beth. Two others have graduated.

Redding had one unsuccessful attempt for school board before being appointed nine years ago. After serving that year, he said, he decided to run because he had a little experience and thought he could help out.

In addition, "when you have four kids, you have to get interested in the schools," he said.

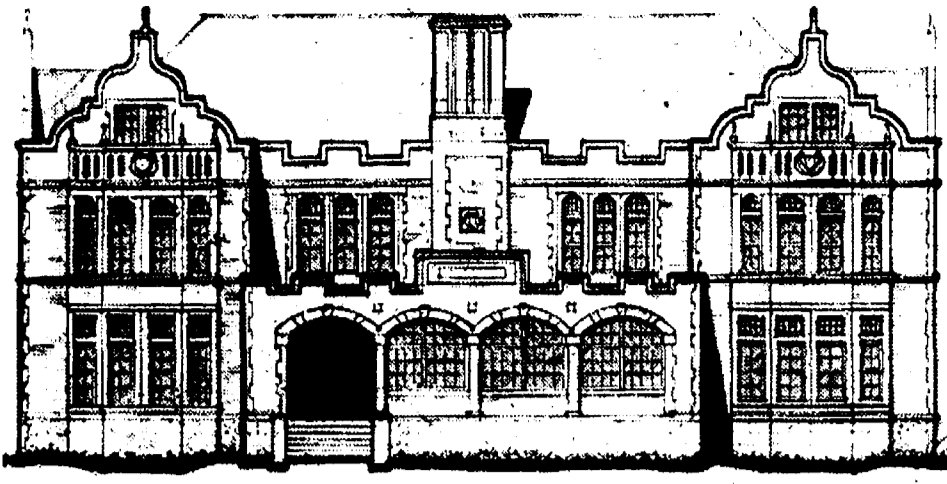
He's running again partly because he is "a conservative voice" on any bond issue. He also said "I see the competition kids are facing and I think it's going to be more stringent in the years to come. Kids will have to be better prepared than they were 20 years ago."

Redding also sees communications problems between the board and district voters. Last Monday night's special board meeting, designed to discuss any school district issue, was described as a "gripe session" by one person who attended. However, Redding said "I thought it was one of the best meetings we've ever had."

"If you listen to what they were saying, we've lost some abilities in communication. I think we need to do a better job of talking. The system we have for communications is not working well."

Redding would like to see the

(Continued on page four)



Established 1871 The Chelsea Standard Telephone (313) 475-1371 300 N. Main St. Chelsea, Mich. 48118

Walter P. Leonard and Helen May Leonard Publishers and Editors Brian Hamilton Assistant Editor Published every Wednesday at 300 N. Main Street, Chelsea, Mich. 48118...

Subscription Rates (Payable in Advance) \$15/year, \$8/6 mos. in Washtenaw County... \$18/yr., \$10/6 mos. Elsewhere in Michigan...

National Advertising Representative MICHIGAN NEWSPAPERS, INC. 827 N. Washington Ave. Lansing, Mich. 48906



JUST REMINISCING

Items taken from the files of The Chelsea Standard

4 Years Ago...

Wednesday, June 3, 1988—Chelsea High school seniors were honored at the annual Senior Class Night in the high school gym. More than 50 awards were presented...

24 Years Ago...

Thursday, June 6, 1968—Chelsea High school class of 1968 would be honored at a week of graduation activities beginning with baccalaureate services in the high school auditorium...

14 Years Ago...

Thursday, June 6, 1977—Tradition would reign for a few hours as nearly 200 members of 1978 graduating seniors participated in...

WEATHER

For the Record...

Table with weather data for May 27 to June 2, including Max, Min, and Precip. columns.

Congratulations Chelsea High School Class of 1992

We are proud of you and our daughter AMY L. MITCHELL



Staffan-Mitchell FUNERIAL HOME

"Since 1862"

124 PARK ST. PH. 475-1444

MICHIGAN MIRROR

By Warren M. Hoyt, Secretary, Michigan Press Association

Oversight Calls for Willow Run Decision Disclosure General Motors executives would be strongly urged to disclose reasons behind their decision to shut down their Willow Run plant...

The resolution indicates that "the private sector must join all levels of government in a team effort to fight for Michigan jobs. It is essential that Michigan's lawmakers have a clear understanding of the criteria that the officials of General Motors used in arriving at the decision to close five Michigan plants..."

Profit said that at the same time GM was announcing plant closures in Michigan, it was announcing openings in Mexico and Poland, where reportedly its costs would be lower. In their efforts to enhance business, the resolution said, manufacturers are taking advantage of not only lower labor costs but "far less stringent environmental standards" as well.

Action on a third Willow Run resolution (HCR 727) calling for the attorney general's office to enter litigation as an aggrieved party against GM was postponed.

Legislators agreed it would be more beneficial to discuss with the ad-

ministration the status of the suit, filed by Ypsilanti township, alleging a violation of a tax abatement agreement by GM.

"To urge the governor and the attorney general to get into a case that may not be a good case... I'd like to know a little bit more about the facts of the case," said Rep. Patrick Gaglardi (D-Drummond Island).

"If GM has no commitment, what is the quid pro quo?" asked Profit, sponsor of the resolution. "Are we giving to corporate welfare?"

Agency Forecast Shows Need To Trim \$200 Million from Budgets A revised revenue forecast by the Senate Fiscal Agency, showing an increase of 6.9 percent in general fund/school aid fund money in 1992-93...

Adding to the budget pressures is \$50 million that has been added to the budget bills as they moved through the Legislature, Senate Fiscal Agency Director Gary Olson said.

Much of that additional funding is due to rejection of the governor's proposals to privatize some functions.

The new estimates will be considered when the administration, Senate and House officials begin meetings to develop a "consensus" revenue estimate to be used in finalizing the budget for the new year.

The SFA's revenue estimate is \$7,804.8 million, compared to general fund/school aid fund appropriations recommended by the governor of \$7,960.7 million.

A couple of issues that will be discussed while the Legislature and Governor John Engler determine final targets for next fiscal year include a revenue sharing freeze that would save \$45.5 million and privatizing liquor merchandising within the Liquor Control Commission, a proposal the governor recommended in his Commerce budget and which the House and Senate have said no to eliminating funding for until the projected savings are realized.

posal the governor recommended in his Commerce budget and which the House and Senate have said no to eliminating funding for until the projected savings are realized.

Village Hires Lineman Apprentice

Village council voted last Tuesday to hire a lineman apprentice for the electric department at a salary of \$11 per hour.

Mark Prescott, who's finishing lineman school at Alpena College, was offered the position.

"Action may not always bring happiness, but there is no happiness without action."

-Disraeli

Advertisement for hearing screening: ONE PERSON IN TWELVE SUFFERS FROM HEARING LOSS FREE "Dial A Hearing Screening Test"™ 475-7080 CHELSEA HEARING AID CENTRE 134 W. Middle St., Suite A Chelsea, MI 48118

Advertisement for Chelsea Help Line: Someone DOES Care... Let Us Help... Call: 475-0111 (SOS Will Help You)

Advertisement for Thomas J. Burke, D.D.S.: 3288 BROAD ST. DEXTER, MI 48130 426-8292 FAMILY DENTISTRY Within walking distance from Dexter schools. Hours By Appointment NEW PATIENTS WELCOME

Uncle Lew from Lima Says:

DEAR MISTER EDITOR: Bug Hookum told the fellows at the country store Saturday night that he has thought the situation up one side and down the other and he is full convinced that the harder nature works to keep her balance the harder man works to knock her down. Soon and not late, Bug declared, she's going to fall and can't get up.

breath that if it weren't for them controlling the duck population there'd be so many ducks they'd all starve. For sure, Clem said, the same thinking applies to all the sports that man enjoys at the expense of animals. The only folks that actual preserve are them that know they're preserving themselves, like farmers and ranchers that know if the land falls they fail.

Advertisement for Joe Redding: RE-ELECT JOE REDDING CHELSEA SCHOOL BOARD "Our task is to work on improvements in our academic programs while maintaining the excellence of our current programs in music, athletics and other extra curriculars. This needs to be done while every effort is made to control costs. VOTE MONDAY, JUNE 8th

Advertisement for Suzanne Mosher Ferguson: SUZANNE MOSHER FERGUSON, ACSW, Clinical Social Worker. ADOLESCENTS ADULTS / COUPLES OLDER ADULTS Sessions by appointment. Chelsea office: 475-9980 Ann Arbor office: 769-2777

Advertisement for E.L.F. Daycare, Inc.: Quality, Affordable Child Care Preschool Summer Camp Daycare Drop-In 313-475-0484 14443 Stofer Court Chelsea, MI 48118

### Women's Bridge Marathon Has End-of-Year Party

Spring flowers was the theme as the Women's Bridge Marathon of the Chelsea Hospital Auxiliary met Thursday evening, May 28, for their end-of-the-year party. Isabel Eisele and Frances Runciman were awarded first prize. The Bridge Marathon, consisting of 12 teams, plays monthly matches from September to June.

The Hospital provided refreshments and an evening of Bridge was enjoyed by all in attendance. High scorer at each table took home a geranium, and each lady present was given a begonia plant.

Anyone interested in joining this marathon may do so by calling Daphne Hodder anytime this summer before Aug. 25. The number to call is 475-7238. You need not be a member of the Auxiliary to join.

### SENIOR MENU & ACTIVITIES

**Weeks of June 3-13**  
**Food, Fun and Fellowship for Seniors**  
 Senior Center, Faith in Action Bldg.  
 Chelsea Hospital Grounds. Ph. 475-9242

**Wednesday, June 3—**  
 Pinochle and Euchre every Wednesday.  
 Past Matrons second Wednesday of each month.  
**LUNCH—**Macaroni beef skillet, Italian blend vegetables, tossed salad, hard roll with margarine, orange sunshine cake, milk.  
 1:00 p.m.—Fitness.

**Thursday, June 4—**  
**LUNCH—**Baked herb chicken, creamed peas and potatoes, carrot raisin salad, whole wheat bread and butter, peaches, milk.  
 1:00 p.m.—Kitchen Band.  
 2:00-4:00 p.m.—Square Dance.

**Friday, June 5—**  
**LUNCH—**Salmon salad plate, tomato wedges, pineapple and carrots, roll with butter, cherry pie, milk.  
 8:00 p.m.—Ma/Pa Dinner—Chelsea High school.

**Monday, June 8—**  
 Widows' Group second Monday of the month.  
 9:30 a.m.—China Painting.  
**LUNCH—**Pork cutlets with gravy, scalloped potatoes, tossed salad, rye bread and butter, baked apple, milk.  
 1:00 p.m.—Bingo.  
 3:00-4:00 p.m.—Swimming.

**Tuesday, June 9—**  
 Pinochle and euchre every Tuesday.  
 8:30 a.m.—Art Class.  
**LUNCH—**Sloppy Joe, corn, cole slaw, bun, apricots, milk.  
 Supper Club.

**Wednesday, June 10—**  
 Pinochle and euchre every Wednesday.  
 Past Matrons second Wednesday of each month.  
**LUNCH—**Chicken Newberg, rice, green beans, garden vegetable salad, roll and margarine, oranges and pineapple, milk.  
 1:00 p.m.—Fitness.  
 3:00-4:00 p.m.—Swimming.

**Thursday, June 11—**  
**LUNCH—**Meatloaf with gravy, mashed potatoes, peas and carrots, whole wheat bread and butter, fruited Jell-O, milk.  
 1:00 p.m.—Kitchen Band.  
**Friday, June 12—**  
 9:00 a.m.—Walk-meet at Senior Center.

**LUNCH—**Vegetable soup with crackers, tuna macaroni salad plate, marinated cucumbers, roll with butter, carrot cake, milk.  
 3:00-4:00 p.m.—Swimming.

### Village To Buy New Dump Truck

Village of Chelsea plans to purchase a new dump truck from Motor City Ford Truck, Inc. in Livonia for \$34,885.66.

The truck will be used by the Department of Public Works. Faist-Morrow Buick, Olds, Chevrolet was the only local bidder.

"I have never known a person to live to be 100 and be remarkable for anything else."  
 —Josh Billings

**BODY GLOW**  
BY PEG

AN AERobic FITNESS EXPERIENCE

WHERE: DANCE ARTS ACADEMY  
 WHEN: EVERY SUMMER SATURDAY  
 BEGINNING JUNE 6, 1992  
 TIME: 8:30A.M.  
 COST: \$3.00 PER CLASS

For more information,  
 call 475-3338



**ENGAGED:** Beverly Dettling Haab and Arthur Haab of Chelsea have announced the engagement of her daughter, Tiffanni Roxanne Dettling, to Shawn Lamont Ion of Manchester and Harry Ion of Parma. Tiffanni graduated from Manchester High school and is employed at Arbor Drugs in Saline. Shawn is a 1987 graduate of Manchester High school and is employed at Perfect Optics in Ann Arbor. A fall 1993 wedding is planned.

## Host Families Needed For Exchange Group

Chelsea High School Music Department is continuing its tradition of international music exchange by bringing to Chelsea an 80-member fife and drum corps from Germany this summer and are asking for host families.

High school music director Bill Gourley, who has organized these tours for the past several years, is especially excited about the arrival of this group. He says, "This is the largest group we have hosted yet, and I'm very pleased to announce that they will be performing in concert at the Chelsea Methodist Retirement Home. It's a wonderful opportunity for the entire community to hear some very exciting music and to develop some international friendships."

The group will be arriving on Sunday, Aug. 16 and will depart on Thursday, Aug. 20.

Responsibilities of the host family are quite minimal, they will need food, a place to sleep, and a ride in the morning to the high school. The group will be very busy during the day and even households where all members work could take part in this community event.

## Adult Education Graduation Set For Thursday

Sixteen members at the Chelsea High School Adult Education Class of 1992 will officially graduate this Thursday, June 4 in the George Prinz Auditorium at the high school.

Commencement is scheduled to begin at 8 p.m. with the professional, "Pomp and Circumstance." The Rev. Mark Weirauch of Zion Lutheran church will give the invocation.

Superintendent Joe Piasecki will preside over the certification of graduates and will be the evening's speaker. Community Education director Jackie Tracy will present the graduates.

School board president Anne ComEAU will present the diplomas. Refreshments will be served following the ceremony.

Tell Them  
 You Read It  
 in  
**THE STANDARD**



**PLANNING SEPTEMBER WEDDING:** Robert and Patricia Degriek of St. Clair Shores have announced the engagement of their daughter, Susan Kathleen Degriek, to Michael Denham Smith, son of Denham and Judith Smith of Chelsea. Susan, a 1992 graduate of Oakland University, is a Human Resources Generalist at Engineering Technology in Troy. Michael, a 1987 graduate of Albion College, is a sales representative at Hovinga Business Systems in Novi. A Sept. 12 wedding is planned.

## FLAG Works To Encourage High Voter Turnout Monday

Friends Linked for Academic Good (FLAG), the non-profit group formed to support causes of interest to Chelsea School District voters, has been working on several fronts to encourage a high voter turnout at Monday's district elections.

The group has arranged for the GATS bus to take Chelsea senior citizens to the polls. The bus will run every half hour. For more information call 475-9494.

The youngest voters, late teens and early 20s, have been invited to a karaoke and bowling party today (Wednesday) from 7:30 p.m. to 10:30 p.m. at Chelsea Lanes.

Other groups of voters FLAG is trying to reach are parents of pre-school children and likely no-voters. Among other activities, members have been leafletting cars at area daycare centers and have had pins saying "Ask me why I'm voting yes" made and distributed.

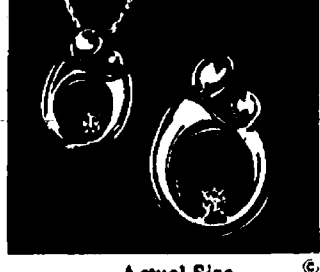
FLAG plans to continue as an incorporated non-profit group after Monday's election. For more information call 475-8155.



### Mother and Child

Searching for a birthday gift that conveys your love? Say it with a "Mother and Child" pendant. This exceptional design is available in Sterling or 14K Gold. You can personalize your expression of love by adding a diamond or birthstones—either way, the "Mother and Child" will be a lasting tribute to mom, and just how much you care.

Available in Sterling from \$35.00 and in 14K Gold from \$75.00



Actual Size  
**WINANS JEWELRY**

**EAR PIERCING FREE** with purchase of piercing earrings. Parental consent required under 18.  
**WINANS JEWELRY**

## Scouts Plead For Rummage Sale Items

With only a few days remaining until Dexter Boy Scout Troop 477's annual rummage sale, the scouts are appealing to community residents to donate as much as the can. The scouts need furniture, appliances, sporting equipment and other household goods. Proceeds will fund the troop's canoeing trip to Canada this summer, merit badge and advancement work, and service projects.

The scouts also are working to raise funds for the new scout cabin the troop is building on Webster Church Rd., near Webster church.

The sale is scheduled 9 a.m. to 9 p.m. June 12 and 9 a.m. to 3 p.m. June 13 at Dexter High school. Troop leaders, scouts and their parents are willing to pick up the donations. Please contact the following volunteers to pick up donations: Dan Kemp, 428-2402; Tom Willis, 862-7833; Richard Fitzgerald, 428-8083; David Schmoekel, 428-2013; Lon Danner, 428-3445; Kevin Adkins, 428-2328; Jim Kulp, 428-4192; Patrick Davidson, 428-2119; Bill Brines, 428-8622; Jason Wylie, 428-5092; or John Rutz, 428-2460.

Give a Gift Subscription to The Chelsea Standard!

## Coming Soon . . . to downtown Chelsea

A New Coffee/Tea Room at

**The Country Rose**

112 E. Middle St.  
475-8188

*Tune*

**Cappuccino Espresso**

Bulk Gourmet Coffee tea, Coca-Cola Pastries, Croissants and more!

Watch for Opening!

**CLASSIFIED ADS**  
*Really work*

Announcing Our  
**SECOND ANNIVERSARY FURNITURE SALE**  
 Now Through June 30

— SAVE —  
**25-40% OFF**  
 All Our In-Stock Furniture

**25% OFF**  
 Special Orders

SELECT FROM:  
 • Pie Safes • Hutches • Jelly Cupboards  
 • Tables and Chairs • Shelves  
 • Rocking Chairs (adults and children)  
 ...Plus Many More In-Stock Items

**Central Street Station**  
 — Folk Art — Country Wares  
 — Furniture — Gifts

Shop In A  
 Turn-Of-The-Century House  
 In The Village of Dexter  
 Across from the Gazebo at Monument Park

**Jewelry Spring Sale**  
*We must clear our inventory*

**30% off Entire Stock**  
*(Custom work excluded)*

**REPAIRS DONE ON OUR PREMISES**

**Ga**  
**Jolla Shoppe**  
 3151 Baker Rd., Dexter  
*(across from Post Office)*

M, T, W, F. . . . 10 to 5  
**Thursday till 4**  
 Sat. & Sun. by appointment  
**426-3222**

*Let's Eat Pasta*

all you can eat!  
**Spaghetti**  
 4 to 8 p.m.  
**Mondays**  
**\$4.75**

With your choice of sauces,  
 garlic toast and salad!

**Gina's Cafe**  
*Family Dining*

1120 South Main Street  
 Chelsea  
**475-7714**

(313) 426-4600

**The Imagination Station**

A Child Care Pre-School Center  
 for children ages 6 weeks to 6 years.  
 A club for older children this summer!

Come and see a new idea in  
 Child Care in Dexter!

**Open House**  
**SUNDAY, JUNE 14**  
 1 to 4 p.m.

Enjoy refreshments, art projects . . . and meet our staff

Owner/Director  
 Sherri Munson

7415 Dexter Pinckney  
 Dexter, MI 48130





# COMMUNITY CALENDAR



## Monday—

Lima Township Board meets the first Monday of each month at 8 p.m., Lima Township Hall. adv24tt

Chelsea High School P.T.T. (Parents-Teachers Together), second Monday of each month, 7:30 p.m., in Board of Education Room.

Chelsea Recreation Council 7:30 p.m., fourth Monday of the month, Village Council chambers. 35tt

Chelsea Kiwanis Club meets every Monday, 8:15 p.m. in the main dining room of Chelsea Community Hospital. For further information, phone John Knox, 475-6963, or write to P.O. Box 67.

Chelsea School Board meets the first and third Mondays of each month, 8 p.m., in the Board Room.

Chelsea Lionsess, second Monday of each month at the Meeting Room in the Society Bank on M-42, Chelsea, at 7:30 p.m. Call 475-1791 for information.

Waterloo Area Historical Society Board of Directors meets the third Monday of each month 7:30 p.m., at Waterloo Farm Museum. For more information call Agnes Dikeman, 769-2219.

## Tuesday—

Dexter Township Board will meet the first and third Tuesdays of the month, 7:30 p.m., at Dexter Township Hall.

Rotary Club, 12 noon Tuesday, at Common Grill.

Chelsea Village Council, second and fourth Tuesday of each month, 7:30 p.m., at Sylvan Township Hall, 112 W. Middle St. adv44tt

Chelsea Village Planning Commission, third Tuesday of each month, 7:30 p.m., at Sylvan Township Hall, 112 W. Middle St. adv44tt

Sylvan Township Board regular meetings, first Tuesday of each month, 7 p.m. Sylvan Township Hall, 112 W. Middle St. advtt

American Business Women's Association 8:30 p.m. at the Chelsea Hospital fourth Tuesday of each month. Call 475-2041 for information.

Olive Lodge 156 F&AM, Chelsea. Regular meeting, first Tuesday of each month.

Lima Township Planning Commission, third Tuesday of each month, 8 p.m., Lima Township Hall. adv230tt

Lions Club, first and third Tuesday of every month, 6:45 p.m., at Chelsea Community Hospital. Ph. 475-7324 or write P.O. Box 121, Chelsea.

Chelsea Rod and Gun Club regular meeting, second Tuesday of each month at the clubhouse, Lingans Rd. 49tt

Chelsea Rebekah Lodge No. 180 meets the first and third Tuesday of each month, at 7:30 p.m.

Chelsea Amateur Radio Club, Inc., fourth Tuesday of each month, 7 p.m., Society Bank basement.

Chelsea Chamber of Commerce Board of Directors meetings, second Tuesday, each month, noon, Chelsea Community Hospital, private dining room. 7tt

Downtown Development Authority, second Tuesday each month at 8 a.m. in the Chelsea Village Council chambers. It is a board of directors meeting. The public is welcome to attend.

Smokers Anonymous—Every Tuesday (except the first Tuesday of each month) at St. James Episcopal church, 3279 Broad St., Dexter, 7:30 to 8:30 p.m. Questions? Call 428-8898. tt

## Wednesday—

Chelsea Zoning Board of Appeals, third Wednesday of each month, 5 p.m., at Sylvan Township Hall, 112 W. Middle St. adv44tt

Fraternal Order of Eagles, Ladies Auxiliary No. 2184 meet second, fourth Wednesday of each month, 7:30 p.m., 7630 Jackson Rd.

Chelsea Athletic Boosters membership meeting third Wednesday of each month; Board of Directors meet the second Wednesday; 7:30 p.m., Chelsea High Media Center.

OES Past Matrons dinner and meeting at Senior Citizen site, Faith in Action building, second Wednesday every month at 11:45 a.m. Ph. 475-1141 for reservations by Monday preceding meeting. 33-2

VFW Post 4076 meeting second Wednesday of each month, 7:30 p.m. VFW Hall, 105 N. Main.

Pittsfield Union Grange, No. 882, meets the second Wednesday of each month, 8 p.m. at Pittsfield Grange Hall, 337 Ann Arbor-Salins Rd., Ann Arbor. 31tt

Friends of McKune Memorial Library meets at 7 p.m. first Wednesday of each month upstairs at McKune Memorial Library. Visitors are welcome.

Chelsea Depot Association will meet the first Wednesday of each month at 7 a.m. at the Chelsea Depot. Every third month, beginning with the month of November, the meetings will be at 7 p.m. All interested persons are welcome to attend.

Chelsea-Manchester Chapter No. 106, OES, meets the first Wednesday of each month, 7:30 p.m., Masonic Temple, 113 W. Middle.

## Thursday—

As Parents We Will group meets third Thursday each month 7 p.m., Beach school media center. For information Cheryl Davis, 475-9131, ext. 28.

Chelsea Rod and Gun Club Auxiliary regular meeting, second Thursday of each month, 7:30, clubhouse, Lingans Rd.

Chelsea Area Players Board meeting second Thursday of each month, 7:30 p.m., at Society Bank meeting room. For more information call 475-2829.

American Legion Post No. 31. General meeting the first Thursday of each month at the post home, Cavanaugh Lake.

Knights of Columbus Women's Auxiliary, first Thursday of each month, 8 p.m. at K. of C. Hall, 20750 Old US-12.

Substance Abuse Lecture Series: Meetings: 7:15 p.m. every Thursday; Chelsea Community Hospital, Dining Room. Series is open to the public to provide awareness and education regarding various aspects of alcoholism or other chemical dependence abuse.

## Friday—

Senior Citizens meet third Friday of every month for potluck dinner, games and cards, 6 p.m. at Senior Citizen Activities Center at Faith in Action Bldg., on Hospital grounds.

Parents Anonymous, a self-help group for abusive or potentially abusive parents, Fridays, 7:45 p.m. Separate children's group, same night. Call 475-3982 or 475-9178 for information.

## Saturday—

VFW Ladies Auxiliary, second Saturday of each month, 9:30 a.m., at VFW Hall, 105 N. Main.

## Misc. Notices—

Chelsea Historical Museum open every Saturday, 1 to 3 p.m. Meet second Monday of each month, 7:30 p.m. Everyone welcome. 51-8

Parent to Parent Program: in home, friendly, visiting support system for families with children. Call 475-3306.

Parents Without Partners, support group for single parents. Youth activities, social events, discussion groups. For membership information, call recording at 973-1933.

Home Meals Service, Chelsea. Meals served daily to elderly or disabled. Cost per meal, \$2.60 for those able to pay. Interested parties call Ann Feeney, 475-1438, or Mary Erskine, 475-2821.

Chelsea Social Service, 475-1581, 2nd floor of Village Offices. Thursdays, 10 to 4, or if an emergency need at other times, call Jackie at 475-1926 or Bonnie at 475-0137.

Assault Crisis Center has moved to 1866 Packard Rd., Ypsilanti 48197. Ph. 483-RAPE, 24-hour crisis line, 483-7942, business line.

Alcoholics Anonymous group, every Tuesday, 12 noon, at UAW Hall, 218 S. Main St., Chelsea. A.A. and Alonon meet every Saturday at 7 p.m., 2nd floor, 104 E. Middle St., Chelsea.

Faith in Action House Community Center, open daily throughout the week provides various free services to those in need. Services include food, clothing, financial help, advocacy and many other forms of assistance. Need friendly help? Call us from 9 a.m. to 4 p.m., 475-3306.

Ann Arbor Singles Ballroom Dance Club—Every Tuesday evening, 2070 W. Stadium. Ph. 930-6055. adv2

Rummage Sale—North Lake United Methodist church, 14111 North Territorial Rd., Friday, June 12, 9 a.m. to 4 p.m., Saturday, June 13, 9 a.m. to 4 p.m. Big assortment. adv3-2

Chelsea Together. For information, call 475-4030, M-F, 9 a.m.-5 p.m., or 475-3933, M-F, 5 p.m.-9 p.m.

Waterloo Senior Nutrition program meets Tuesdays and Thursdays at 12 noon, Waterloo Township Hall. For reservations call 475-7439 between, 10 a.m. to 1 p.m. Lunches, cards and fellowship.

## Cashman a Trustee

(Continued from page one)

Merkel, Stephanie Kanten was not present.

Another reason Bentley said he voted against Cashman's appointment is that a full council wasn't present.

The first time Steele was faced with this situation was in March of 1990, when he was first elected president. He nominated former village president Charles Ritter for his vacated trustee seat, as Ritter was the first runner-up in the election for trustee. However, the nomination of Ritter received no support.

Cashman publicly supported Steele in the last elections. Based on statements made to The Standard, Cashman appears to have a similar philosophy of government, especially concerning long-term planning.

Cashman works in the University of Michigan's computer services department.

## 34 Years Ago . . .

(Continued from page two)

Thursday, June 5, 1958—

Four candidates, two up for re-election and two new nominees, were running for office as school board trustees in the annual school election. Seeking posts were incumbents Dr. J. V. Fisher and Earl Beeman as well as Gerald Carr and Malcolm Reith.

Chelsea Community Fair Board members, under the chairmanship of Thomas Bust, were making plans for a chicken barbecue to raise money for equipment for the new building now under construction on the fairgrounds.

Stanley C. Toney was graduated from the U.S. Military Academy at West Point, N.Y.

Mr. and Mrs. Roy Bertke and their daughters, Marcia and Barbara, left for Annapolis, Md., where they attended the graduation of their son, Midshipman First Class David E. Bertke, from the U. S. Naval Academy.

U.S. food consumption has changed dramatically over the past 20 years. The Department of Agriculture says that Americans are not only eating more food, their diet has shifted away from meat or animal products and toward a mixture of animal products, vegetables, fruits, nuts and grains.



JEAN K. O'HAGAN

## Fireworks Planned

Chelsea will once again have a fireworks show this Fourth of July, sponsored by Chelsea 1995 organization and the Chelsea Jaycees.

Chelsea 1995 has budgeted \$7,500 for the show and is soliciting donations. Colonial Fireworks is providing the fireworks.

The second annual Ice Cream Social will be held before the display at 8 p.m. at Chelsea Shopping Center. The fireworks will follow at 10 p.m.

Donations for the show may be sent to Chelsea 1995, 114 N. Main St., Suite 4, Chelsea 48118.

Village council authorized the show early last month, with its standard request for a \$2 million liability insurance policy to cover the village.

An antique show will be in the middle of its run at the fairgrounds, the site of the fireworks. Insurance requires that the show be concluded for the day and that all antiques are enclosed in steel buildings.

## Jean O'Hagan Named to Post With Ingham Friend of Court

Chelsea resident Jean K. O'Hagan, was selected from a field of 160 state-wide candidates as the new Chief Assistant Friend of the Court of Ingham county.

She will manage a staff of 65 people as top assistant to James A. Pocock, Ingham County Friend of the Court.

Jean is a 1990 graduate of the Detroit College of Law and prior to the current appointment, had been employed for 17 years with the County of Washtenaw. For the last 14 years, she has worked in a number of capacities in the enforcement division of the Washtenaw County Friend of the Court.

She lives at 320 S. Main with her husband, Terry, an attorney.

Don't forget to renew your Chelsea Standard subscription!

**LOOK OUT!**  
He not only is "The Eating Machine," he will be driving! **HAPPY 16th BIRTHDAY**  
JUNE 2 **DAVID**  
Love,  
Dad, Mom, Romulo,  
Jamie, Dusty & Cheers

**BOB BILL**

If you know these "Kuhl" twins, Hope you wish them A Happy **50th** on the 1st of June Love, All Your Family!

Quality Service is Our Business

**ROSENTRER EXCAVATING INC.**

475-1990

Basements-Drainfields-Septic Tanks-Sewer Backhoe Work-Bulldozer-Trucking-Gravel Sand-Topsail-Snow Removal

June 7, 1947

**Happy 45th Anniversary Mom & Dad**

your children

Armin and Edna Kuhl

**SUBSCRIPTION ORDER FORM** for **The Chelsea Standard**

Name \_\_\_\_\_  
Address \_\_\_\_\_  
City \_\_\_\_\_ State \_\_\_\_\_ Zip \_\_\_\_\_

clip and send with payment in advance to  
**THE CHELSEA STANDARD, 300 N. MAIN, CHELSEA MI 48118-1502**

**BY MAIL DELIVERY**

\$18/year, \$8/6 mos.  
In Washtenaw County, Grass Lake, Gregory, Hamburg, Munnich, Northville, Pinckney, Plymouth, South Lyon & Stockbridge

\$18/yr., \$10/6 mos.  
Elsewhere in Michigan

\$20/yr., \$11/6 mos.  
Outside Michigan (in U.S.)

Renewal  
 New Subscription

## 1992 Graduates Lets Hear It For The Boys... Our Boys!

**Richard M. Weston**  
Pinckney High School Class of '92

**Matthew J. Volante**  
Chelsea High School Class of '92

Love, Pride and Congratulations from your parents, Wayne and Linda Weston



TWO WINNERS in the South Elementary School Spelling Bee recently were fifth grader Erik Strahler, left, and fourth grader Collin Bertram, right. Bertram was the over-all winner while Strahler was second over-all.

## Fair Schedule in State Lasts from June to October

Eighty-eight county, agricultural, 4-H and youth fairs, plus two state fairs, are scheduled for Michigan's 1992 fair season which opens June 22 and runs through Oct. 3.

"Michigan's agricultural fairs are more than Ferris wheels, cotton candy and games of skill. They are showcases for the horticultural, educational, mechanical and artistic skills of Michigan residents regardless of age," Bill Schuette, director of the Michigan Department of Agriculture, said. "I invite every Michigan citizen to visit at least one fair this summer."

Michigan's two state fairs are the Upper Peninsula State Fair at Escanaba, Aug. 18-23 and the Michigan State Fair at Detroit, Aug. 28-Sept. 7.

Other fair locations and their dates, as compiled by MDA's Expositions and Racing section are: June 22-27, Marion; June 22-28, Ithaca; June 30-July 5, Lake Odessa;

July 5-11, Greenville; July 7-11, Manchester and Vassar; July 12-18, Big Rapids; July 13-18, Hartford and Marne; July 15-18, Grayling; July 16-18, Mio; July 18-25, Ravenna; July 18-25, Charlotte; July 19-25, Croswell and Standish; July 19-26, Caro; July 20-24, Alma; July 20-25, Cassopolis and Hastings; July 20-26, Fowlerville; July 23-26, Chatham and Sparta; July 24-26, Stephenson; July 26-Aug. 1,

Gladwin; July 27-31, Ann Arbor; July 27-Aug. 1, Evart, Hale and Holland; July 30-Aug. 2, Greenland; July 31-Aug. 2, Manistique; July 31-Aug. 8, Mason; July 31-Aug. 9, Ionia;

Aug. 1-8, Cheboygan and Harrison; Aug. 2-8, Sandusky; Aug. 3-6, St. Johns; Aug. 3-7, Falmouth; Aug. 3-8, Davisburg, Goodells and Monroe; Aug. 7-9, Pelkie; Aug. 8-15, Mt. Pleasant; Aug. 8-15, Bad Axe, Coldwater, Corunna and Jackson; Aug. 10-15, Fremont, Gaylord and Lowell; Aug. 10-16, Imlay City and Traverse City; Aug. 11-15, Bay City, Belleville and Kalkaska; Aug. 12-15, Atlanta; Aug. 12-22, Berrien Springs; Aug. 13-18, Ironwood; Aug. 16-22, Adrian, Marshall and Midland; Aug. 17-21, Baldwin; Aug. 17-22, Cadillac and West Branch; Aug. 17-23, Genesee; Aug. 18-23, Armada; Aug. 19-22, Lincoln; Aug. 20-22, Bellaire and Roscommon; Aug. 20-23, Iron River; Aug. 23-29, Alpena; Aug. 23-30, Petoskey; Aug. 24-28, Hudsonville, Kalamazoo and Ludington; Aug. 25-29, CHELSEA; Aug. 26-30, Hart; Aug. 27-30, Hancock;

Sept. 1-7, Kinross; Sept. 2-7, Onkama; Sept. 3-7, Norway; Sept. 8-12, Saline; Sept. 10-12, Stalwart; Sept. 10-13, Marquette and Posen; Sept. 11-19, Allegan; Sept. 12-19, Saginaw; Sept. 20-26, Centreville; Sept. 27-Oct. 3, Hillsdale.

## Grass Lake School Voters Face 4 Millage Proposals

Voters in Grass Lake Community Schools will decide four millage issues in their local elections on Monday, June 8.

On the ballot will be combined renewal and 1.95 mill increase for operating expenses, for a total operating millage of 28.45 mills.

The second proposition involves a 1.75 mill renewal for renovations, repairs, and equipment. Money generated, an estimated \$143,290, could not be used for general operations.

A third proposition asks for a new .5 mills dedicated to transportation for the next five years. That money would allow the district to purchase one bus per year with the \$40,940 that would be raised. The district last purchased a bus in 1989.

The fourth proposal is a Headlee Amendment over-ride. That would allow the district to collect an additional \$33,370. The Headlee Amendment requires that millage rates be rolled back when growth in state equalized valuation rises faster than

inflation. Without the rollback, general fund cuts will have to be made.

If all millage proposals are passed, district residents would see their taxes rise by 2.45 mills.

A pamphlet distributed by Friends of Grass Lake Schools give examples of how school costs have risen since 1980, when the millage was last increased. Cost of a bus has nearly doubled, from \$21,353 to \$40,000; an American literature textbook has nearly tripled from \$10.85 to \$29.97, and full family Blue Cross insurance has increased from \$86.76 monthly to \$377.78.

Grass Lake Community Schools has not had a millage increase in 12 years. During that time, the district has used its fund equity, or rainy day fund, to deal with increased costs. Now, however, the district does not want to dig into that account any further.

Polls will be open from 7 a.m. to 8 p.m. at George Long Elementary school.



JOE BEARD, a teacher at Beach Middle school and president of the Chelsea Education Association, was given an Exemplary Employee Award last Wednesday, May 27 at an annual luncheon. School board president Anne Comreau made the presentation.

**Most VCRs Repaired In 1-2 Days** **SPECIAL VCR CLEANING Now just \$14.95**

**VILLAGE VCR & ELECTRONICS**

920 S. MAIN, CHELSEA 475-7030

FREE VCR ESTIMATES TELEVISIONS VCRs ELECTRONICS

HOURS: Tues. thru Fri., 11-7. Sat., 10-4

**Territorial Quality Plumbing**

NEW CONSTRUCTION • ADDITIONS • REPAIR SERVICE

Hot Water Heaters • Toilets • Sinks

LICENSED (313) 498-3556 INSURED

**BUSH & HUTCHINSON, P.C.**

CERTIFIED PUBLIC ACCOUNTANTS

Bookkeeping, Tax Consulting, Payroll Financial Planning, Business Start-Up PERSONAL • BUSINESS • CORPORATE • FARM

MICHAEL W. BUSH, MBA, CPA 8064 Main St., Dexter  
DEBORAH J. HUTCHINSON, CPA Telephone: 426-3043

**NEWCOMERS WELCOME SERVICE**

A tradition of helping newcomers feel at home

If you are new in the Chelsea School District, call 475-9962 for your complimentary welcome packet.

Sponsored By  
Chelsea Chamber of Commerce and the leading Merchants of Chelsea

Air Conditioning/Heating

**Marzec Mechanical**

Heating & Air Conditioning Energy Management

TRANE Authorized Dealer

Sales & Service • Residential & Commercial

CHELSEA 475-3166

**Simplicity**

Sales, Service, Parts

Model LTM

- 12.5 h.p. Vanguard twin cylinder engine
- 38" axle-mounted mower
- Deluxe hydrostatic transmission

12.5 LTM 38

Dexter Rental-Dexter 3629 Central St. 426-2216 OPEN 7 DAYS A WEEK

**DRAINS and SEWERS CLEANED ELECTRICALLY**

FLOOR DRAINS MAIN LINES STORM SEWERS

PROMPT SERVICE

SEPTIC TANKS - Cleaned, Installed, Repaired DRAINFIELD & OTHER EXCAVATING

RESIDENTIAL • COMMERCIAL • INDUSTRIAL

**BOLLINGER SANITATION SERVICE**

PHONE (313) 475-2097

## College Week—Perfect Gift for Special Person

By Terry Jones, Extension Home Economist

Are you looking for an extra-special Mother's Day or Father's Day gift for that special someone? Why not give him or her a gift that will last a lifetime—a trip to Extension Home Economics College Week '92 at Michigan State University. College Week—an annual four-day experience in lifelong learning—takes place June 22-25 on the East Lansing campus.

Every year almost 1,000 people from nearly every county in Michigan attend College Week, which is sponsored by the Extension Home Economics Program of the MSU Co-operative Extension Service. They live and eat in a campus residence hall, attend classes and workshops of their choice, hear a keynote talk by a well known speaker and have free time to visit the state Capitol, go to the theater, attend special workshops or go on tours.

This year's keynote speaker is

Sherry Baker, president of Educational Therapy, Bay City, whose theme is "Celebrating Yourself." Another highlight is the extravaganza "Rhythm of the World," presented by the internationally-famous group of 100 singers and dancers, "Up with People."

More than 50 classes dealing with today's current topics are offered. Participants choose and attend four of these classes in addition to their many afternoon and evening activities.

The cost for College Week is \$175, which includes 120 meals, three nights lodging, all registration fees and class materials. The fee for persons who wish to commute to College Week is \$75, which includes fees, class materials and lunch each day. Participants can also choose to attend for one day only. The one day fee is \$40 and includes lunch.

If you'd like to give a gift of learning, packaged as a fun vacation, to someone special, contact the Washtenaw County Extension home economist for more information. Write to 4133 Washtenaw Ave., P.O. Box 8845, Ann Arbor 48107, or call (313) 971-0079.

The first employers' liability legislation was in 1856, according to "Labor-First in America," a U.S. Labor Department publication. Passed in Georgia, it applied only to railroad workers.

**GUITAR LESSONS**

Fast Results!

20 years experience; all styles

**GUITAR REPAIR**

Call 475-2964

**ARNET'S - BECKER'S**

**MERGER SALE NOW IN PROGRESS Save Up to 50%**

Fine Memorials Since 1904

4495 JACKSON RD., ANN ARBOR

JIM MCINTYRE Signmaker

**WELDING & FABRICATION SERVICE**

- SHORT RUN PRODUCTION
- PLASMA CUTTING
- PRESS BRAKE
- SHEARING
- HELIARC

**WE'LL BEND TO YOUR NEEDS**

475-7617 ALL SEASON COMFORT

121 BUCHANAN, CHELSEA

A FULL SERVICE PHOTO LAB and PORTRAIT STUDIO

Batteries Film Prints from Slides Passport Photos

Reprints Enlargements Copy Old Photos Slides Frames

HIGHEST QUALITY and FAST SERVICE

**Village** A Full Service Photo Lab—1-Hour Service—Free Double Prints

**Instant Photo** Chelsea Shopping Center 1090 South Main Street 475-5920

**The Chelsea Standard PERSONALIZED STATIONERY SALE**

Typestyle VII

Typestyle VII

Typestyle VII

**Rytex Deckle Edge Vellum Stationery NOW \$17.95 regularly \$28**

Beautiful.

A distinctive deckle edge makes this quality letterpaper a statement in fine taste. And personalized too.

Stationery or notes measure 6 1/2" x 7 1/2". Available in shades of Ivory, white, pink or blue with a choice of blue, grey or brown ink for imprinting. Gift boxed: 100 personalized sheets or notes, 100 personalized envelopes.

Suggestion: 50 extra, non-personalized sheets for second pages...only \$5.00 with order.

Place your mail order today!

THE CHELSEA STANDARD 300 N. Main, Chelsea

Deckle Edge Vellum \$17.95 each sheet. INCLUDES: (1) check) 50 extra, plain sheets @ \$5.00.

Imprint Name: \_\_\_\_\_ Street: \_\_\_\_\_ City: \_\_\_\_\_ State: \_\_\_\_\_ Zip: \_\_\_\_\_

Initials for notes: \_\_\_\_\_

Check choice of stationery or notes, paper color & ink color.

STATIONERY: Send \_\_\_\_\_ boxes (L020-2AD)

NOTES: Send \_\_\_\_\_ boxes (L020N-2AD)

PAPER COLOR: Ivory (I) White (W) Pink (P) Blue (B) Typestyle: (I) III (II) MC (I) VB (initials on notes only)

Ink color: (I) Blue (I) Grey (I) Brown

Ordered by: \_\_\_\_\_

Address: \_\_\_\_\_ Apt. \_\_\_\_\_

City, State, Zip: \_\_\_\_\_

Please add sales tax to prices. Phone: \_\_\_\_\_

Check Payment enclosed. Sorry, no C.O.D.'s.

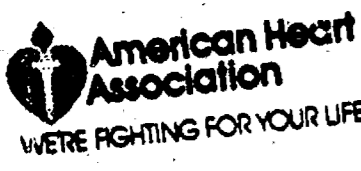




Don't be a heartbreaker



Stop smoking.



Please Notify Us In Advance of Any Change in Address

## Curtis Convicted in Stabbing Death of Wife

Dexter township resident William Curtis was convicted last week in the stabbing death of his wife, Sue Ellen Curtis, last April 1 in their home.

The jury indicated the prosecution didn't prove that Curtis planned the murder, but convicted him of first-degree felony murder, a crime that takes place during another felony.

Curtis, 34, is scheduled to be sentenced June 23. The verdict carries a mandatory life prison term without the possibility of parole.

Curtis was also convicted on two charges of armed robbery, and the use of a firearm during a felony. He was acquitted on pre-meditated murder and murder conspiracy charges.

The jury deliberated less than seven hours.

Curtis' homosexual lover, Todd Plamondon, 24, testified against Curtis in a plea bargain arrangement. He said Curtis offered to pay him \$5,000 for the murder, but claimed he did not actually commit the murder. Curtis, on the other hand, claimed he was being blackmailed by Plamondon, who threatened to reveal their relationship to Sue Ellen Curtis and William Curtis' employer.

According to assistant prosecutor Jerome D. Farmer II, Plamondon passed three lie detector tests while Curtis failed the only one he took. That evidence, however, could not be revealed during the trial.



GENA KLINK'S first graders at South school recently made a model of Buckminster Fuller's geodesic dome for a class project on technology. Individual triangles were put together by the students to form the dome. Students in the class include Andy Adams, Lisa Armstrong, Scott Birgy, Tony Bowen, Ricky Castleberry, Jeffrey Delkis, Jeff Galaska, Lindsay Giedraitis, Davy Graff, Gerald Harris, Katie Houk, Amanda Jacobs, Sarah Kaminsky, David Knox, Stephen Lambert, Allison Mann, Margaret McKenzie, Ryan Montgomery, Samantha Ortiz, Tristan Patt, Jason Risner, Shaun Schanz, Nicolas Valchine, Kimberly Whitaker, and Nick Wood.



PLASTIC TAPE, and a little ingenuity by Margaret Nance's fifth graders at South school last week turned into an inflatable building, complete with entrance tunnel and tables and chairs. Sandi Graff, top left, helped co-ordinate the project to help the students understand some basic scientific principles. Students in the class include Allan Kelley, Anna Balyo, April Bassett, Danile Dault, Stephen Foster, Jessica Gillespie, Daniel Graff, Amy Hall, Laura Heller, Peter Heydlauff, Karessa Johnson, Megan Marshall, Amanda McConeghy, Matthew Milazzo, Megan Morgan, Justin Schanz, Dan Schnaidt, Aaron Smith, Erik Strahler, Joshua Tabaka, Steven Tarolli, and Rachel Zinke.

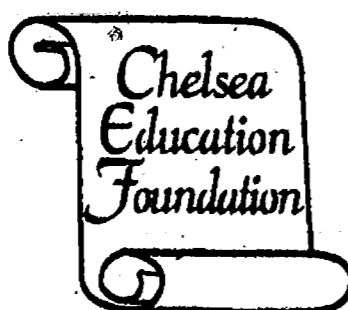
## TWENTY SEVEN CENTS FOR EXCELLENCE

The Chelsea Educational Foundation was created in 1990 to provide funding for educational programs to benefit the residents of the Chelsea Community. We are not part of the school system but a group of volunteer citizens who meet to address the future educational needs of our community and help fund innovative and supplemental educational programs. We strongly believe in our school system and support their many fine accomplishments.

- APPROXIMATELY 75% OF CHELSEA STUDENTS GO ON TO COLLEGE
- HIGHEST PARENT INVOLVEMENT IN THE HISTORY OF THE SCHOOL DISTRICT
- TOP A.C.T. SCORES FOR COMPARABLE SCHOOLS IN THE IMMEDIATE AREA
- 50% OF STUDENTS INVOLVED IN INTERSCHOLASTIC ATHLETICS
- SUBSTANCE ABUSE ISSUE ADDRESSED BY PROVIDING PROFESSIONAL INDIVIDUAL AND GROUP COUNSELING
- 44% CURRENTLY INVOLVED IN BAND/MUSIC PROGRAMS AND INCREASING SUBSTANTIALLY NEXT YEAR
- COMPREHENSIVE EDUCATIONAL PROGRAM FOR PEOPLE WANTING TO ENTER THE WORK FORCE IMMEDIATELY AFTER HIGH SCHOOL
- MAINTAINING REASONABLE PUPIL/COUNSELOR RATIOS TO MEET THE ACADEMIC AND SOCIAL NEEDS OF OUR STUDENTS
- CONTINUED COMMITMENT TO MUSIC, ART, AND PHYSICAL EDUCATION AT THE ELEMENTARY LEVEL
- MAINTAINING REASONABLE CLASS SIZES AT ALL LEVELS TO INSURE OUR CHILDREN GET THE ATTENTION THEY NEED
- QUALITY CURRICULUM DEVELOPMENT PROCESS
- OUR CURRENT MILLAGE IS 6th OUT OF 10 WASHTENAW COUNTY SCHOOL DISTRICTS IN OPERATING MILLAGE AND 9th OUT OF 10 IN TOTAL MILLAGE
- WE WILL WORK FOR INCREASING THE CAP OF THE HOMESTEAD PROPERTY TAX TO ASSIST SENIOR CITIZENS ON FIXED INCOMES

Support the education of our children by passing this millage. Then put pressure on our legislators for a sensible plan for funding education in this state. It will only cost 27 cents a day (assuming the average home has an S.E.V. of \$50,000) to continue supporting our school system at the same level.

Jane Diesing  
Dr. Richard Ernst  
Patrice Fahrner  
Ken Gietzen  
Ron Hatch  
Amy Heydlauff  
Tracy Heydlauff



Dudley Holmes  
Tom Huetteman  
Dave McLaughlin  
Jan Roberts  
Barb Rose  
Charles Skelton

## TWENTY SEVEN CENTS FOR EXCELLENCE

### NOW OPEN LATER

# Cottage Inn

Since 1948

# Pizza®

Like pizza was meant to be™

1100 SOUTH MAIN  
CHELSEA

## 475-8833

NEW HOURS:

Monday-Thursday . . . 11 a.m. to midnight  
Friday-Saturday . . . . . 11 a.m. to 1 a.m.  
Sunday . . . . . noon to 11 p.m.

### LATE NIGHT SPECIAL

any pizza, any size any number of toppings



for only \$7.95 plus tax

VALID AFTER 9 p.m., ONLY, thru June 10, 1992.  
At Chelsea Cottage Inn. One coupon per pizza. Not valid with other offers.

# SPORTS

Let's Go Bulldogs!



## Bulldogs Are Double Trouble in Districts



**CHELSEA BULLDOGS** softball team proclaim their ranking after winning the district title Monday afternoon at the Chelsea field. The Bulldogs had no trouble defeating Fowlerville in the opener and Tecumseh in the championship game. The Bulldogs open region play Saturday against Monroe St. Mary's Catholic Central, a team that hasn't been kind to Chelsea over the years.



**COACH WAYNE WELTON** reacts after taking an ice Monday's district tournament at the Chelsea field. The water bath at the conclusion of awards ceremonies at Bulldogs move on to the region tournament Saturday.

## Rindle, White, Blank Dreadnaughts, Flyers

## Bulldog Softball Team Cruises to District Title As Petty Wins Twice

For the second straight season, the Chelsea Bulldogs softball team will move on to the region tournament in Monroe as they won Monday's rain-delayed district tournament at home with victories over the Fowlerville Gladiators and the Tecumseh Indians. Chelsea had a relatively easy time of it as Jennifer Petty pitched and won both games, shutting out the Gladiators, 9-0, before putting away the Indians for the championship, 11-2.

The games were originally scheduled for Saturday at Weber Fields but poor weather forced postponement until Monday, when the games were played at the high school field.

"I knew we would play this way and I told the kids before the tournament," said Chelsea coach Joe Beard.

"We played two exceptional games. We were solid defensively and did what we had to with the bats. We had no errors in the first game and two in the second game that didn't hurt us."

The Gladiators, Beard said, played about as well as they could play, even though Petty wasn't quite as sharp with her pitches as she has been this



**JENNIFER PETTY** slides safely for an insurance run during Monday's game against Tecumseh.

season. However, the senior hurler picked up her 21st win with a two-hit, eight-strikeout, no-walk performance. Petty's two-run double in the second

inning provided what turned out to be plenty of offense for the day. The Bulldogs went on to score in every inning thereafter.

Heather McConoghy and Erin Knott each had three hits, and Knott had three RBI, and Petty had two hits.

In the second game, Petty pushed her record to 22-1 as she allowed four hits and two walks, and struck out three Indians. It was the fourth time this year Chelsea beat Tecumseh.

Again, the Bulldogs were in command from the beginning as they led 4-0 after four innings and 8-2 after five.

Chelsea offense collected 11 hits, including three by Petty, two each by Theresa Hurst and Liz Sager, and a triple by Kelly Cross.

Chelsea Bulldogs baseball team may be peaking at just the right time.

Monday afternoon Chelsea shut out the Dexter Dreadnaughts 7-0 in the district tournament semi-finals, then crushed the once top-ranked Willow Run Flyers in the finals, 13-0.

Senior Jacob Rindle tossed a one-hitter in the opener and faced just 22 batters over seven innings. Then junior Gary White pitched a four-hitter in the finals and managed to pitch around a couple of errors.

It will be Chelsea's third straight trip to the regional tournament, where they will face Carleton-Airport at noon this Saturday in Monroe.

"It is quite an accomplishment for this team and certainly a thrill," said Chelsea coach Wayne Welton, who took an ice water soaking after the finals.

"Especially in this district, which is probably one of the toughest in the state."

Willow Run, Tecumseh (who lost to the Flyers in the semis), and Chelsea were all ranked in the top 10.

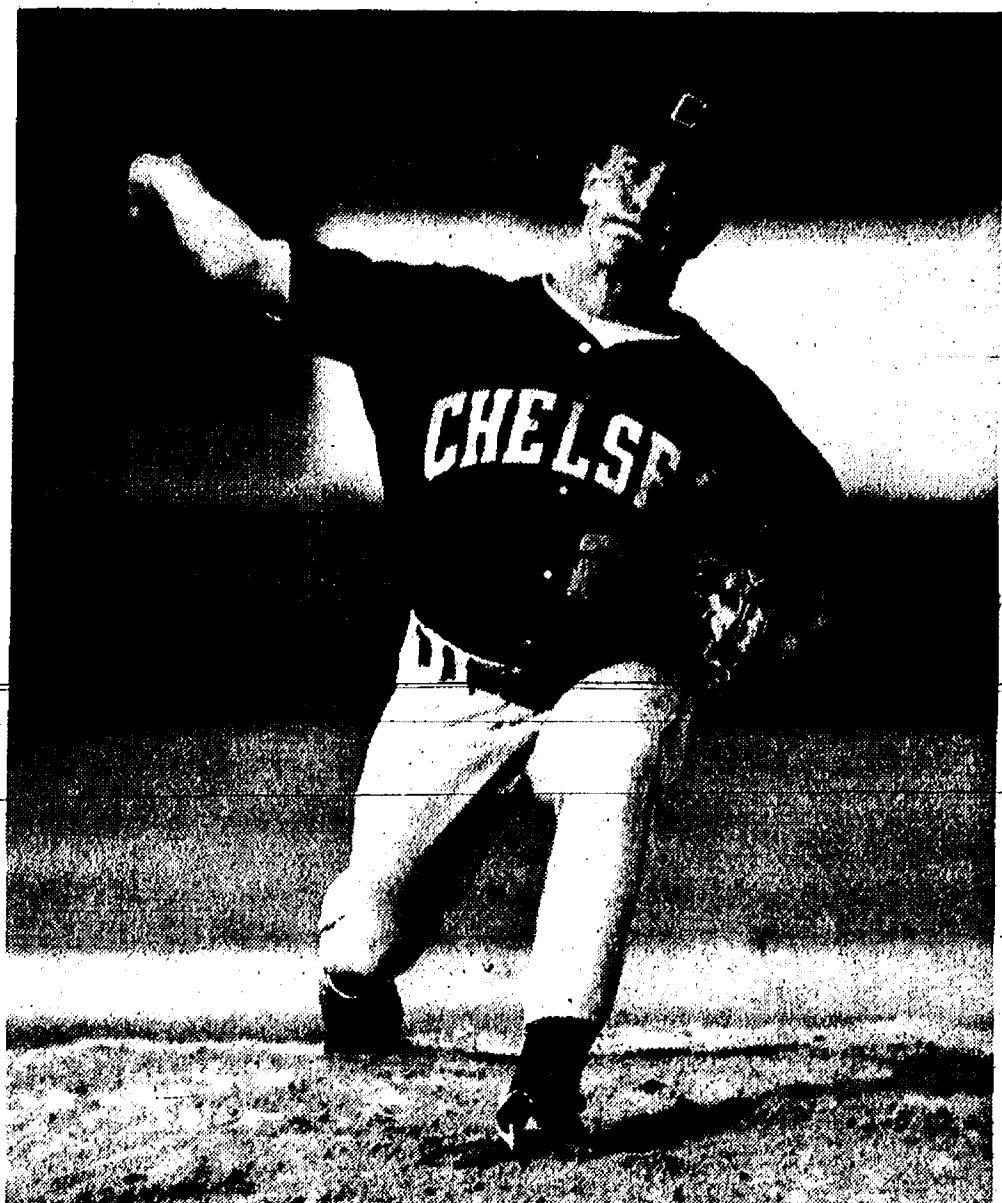
Rindle dominated the first game both offensively and on the mound.

"It was the best he's thrown all year," Welton said.

"He's capable of overpowering batters but this time he really chose to pitch and use everything he has."

Rindle was also 4-4 in the first game and 6-8 for the day.

(Continued on page 11)



**GARY WHITE** tossed a four-hitter in Chelsea's 13-0 win over the Willow Run Flyers in the finals of the district baseball tournament on Monday.

## Region Action Begins at Noon In Monroe

Saturday's region softball and baseball tournaments get underway at Monroe-Jefferson High school complex at noon.

Chelsea's baseball team plays Carleton-Airport in the opener, while the Bulldogs softball team opens with nemesis Monroe St. Mary's Catholic Central.

Take I-94 east to I-275 south, to I-75 south. Exit at Nadeau Rd. Veer right, go to the stop sign, and turn left on Nadeau Rd. Drive over the viaduct, two miles to a stoplight and turn left on North Dixie Highway. Go one-quarter mile to Williams Rd. and turn left.

**NOW OPEN**

**GREEN ACRES DRIVING RANGE INC.**

**NOW OPEN**

9 a.m. to 9 p.m. daily

Present this ad to **SAVE \$1** ON ANY SIZE BASKET OF BALLS (one per person)

20000 Sager Rd., Chelsea  
at M-52 (across from Chrysler Proving Grounds)  
2 miles south of I-94

**(313) 475-3050**

**DC CONSTRUCTION & MECHANICAL SERVICES, INC.**

**SERVICES WE OFFER:**

<b>MECHANICAL</b>	<b>CONSTRUCTION</b>
• PLUMBING	• NEW HOMES
• HEATING	• ADDITIONS
• COOLING	• DECKS
• ELECTRICAL	• PORCHES
• CARPENTRY	• MASONRY

**FREE In-Home Estimates**

**475-0420**

Licensed & Insured

**CHELSEA AQUATIC CLUB**

**CAC**

**CHELSEA AQUATIC CLUB**

**CHELSEA AQUATIC CLUB - Summer, 1992**

**ADVANCED REGISTRATION AND ICE CREAM SOCIAL**

**Friday, June 5, 1992—6:00 to 7:45 p.m.**

Family open swim and ice cream sundaes. Advanced registration for summer swim and dive programs.

**CAC SWIM TEAM PROGRAM**

**ALL PRACTICES—Mondays through Fridays—Begins June 8**

Ages 13 & Up	7:00-8:30 a.m.
Ages 9-12	8:30-10:00 a.m.
Ages 8 & Under	10:00-11:00 a.m.

Swim meets will be held on 6/20, 6/27, 7/1, 7/11, 7/18. Championships to be held mornings July 20-23 for age group swimming.

\*Alternate practice times available for orchestra conflicts, etc.

**CAC DIVING PROGRAM**

**ALL PRACTICES—Tuesdays, Wednesdays, and Thursdays—Begins June 9**

Ages 11 & Up	3:30-5:30 p.m.
Ages 10 & Under	4:30-5:30 p.m.

Diving meets will be held on 6/19, 6/26, 6/30, 7/10, 7/17. Championships to be held afternoons July 20-23 for age group diving.

RATES: \$50.00 per person  
\$40.00 2nd family member or program  
\$30.00 3rd family member or program  
\$20.00 4th family member or program  
\$10.00 5th family member or program

Register poolside June 8 and 9. Call Wendy at 475-0223 with questions.

**ADULT WATER AEROBICS**

June 9-July 30  
Tuesdays & Thursdays, 7:30-8:30 p.m.

RATES: \$32.00 - 1x per week  
\$48.00 - 2x per week

Register poolside. Call Laura at 475-7672 with questions.

The Chelsea Aquatic Club is a parent-run organization for the promotion of local aquatics programs at Charles S. Cameron Pool in Chelsea.





**DESIGNATED HITTER** Pat Steele swings for a double during the Dexter game Monday afternoon in the semi-finals of the district tournament. The Bulldogs advance to the region tournament this Saturday in Monroe.

## JV Softball Team Ends With Wins Over Dexter

Chelsea Bulldogs junior varsity softball team concluded their season May 22 with two victories over the Dexter Dreadnaughts, 19-1 and 19-6 at home.

In the opener, Chelsea pitchers Amy Petty and Lauren Zuehlke combined on a one-hitter over five innings. Chelsea took a 4-0 lead in the first inning, the big hit a triple by Aubree Gerardi. She had two of Chelsea's eight hits.

After scoring two runs in the second and one in the third, the Bulldogs erupted for 12 runs in the fourth inning, the big hit a triple by Aubree Gerardi. She had two of Chelsea's eight hits.

In the second game, Chelsea again had a 12-run inning, this time in the second inning to take a 16-1 lead.

Bulldogs were issued 14 walks by Dexter pitching as Chelsea had just three hits.

Chelsea pitchers Melissa Schulz and Lauren Zuehlke limited the Dreadnaughts to two hits.

"Amy Bowling played her first game at catcher due to injuries to our other three catchers," said Chelsea coach Kim Eder.

"She did a great job and was able to throw out a runner at third and make a tag out on a passed ball."

Chelsea had singles by Martha Merkel, Nancy Pidd, and Jenny Holzhausen.

In other recent action, Chelsea whipped Ypsilanti twice, 25-2 and 23-3.

Schulz was the winning pitcher in the first game.

It was an offensive explosion for the Bulldogs as Schiller had a double and a pair of homers, Charlotte Ziegler hit two singles, Merkel had a single and a double, Petty hit two singles and two doubles, Gerardi had three singles, Melissa Messner had two singles, Schulz had two singles and a double, and Lindsay Gaken had two singles, a triple, and a homer.

Pidd was the winning pitcher in the second game.

Chelsea had three singles each by Holzhausen and Merkel, and two singles each by Petty, Pidd, Gerardi, Schulz, and Messner.

Chelsea finished with a 26-4 record.

"I'm happy with how the season turned out," Eder said.

"I had a young team with 12 freshmen and three sophomores. There's a lot of talent in these girls and with a solid program behind them I am optimistic this team will continue on and be very successful at the varsity level."

The first petition to a state legislature for a shorter working day was presented in 1802 by Georgia carpenters, according to "Labor Firsts in America," a U.S. Labor Department publication. The carpenters sought to place their profession "upon a more respectable and recognized social footing."

## Sports Physical Exams Scheduled for June 10

Sports physicals for all Chelsea students entering grades six through twelve for the 1992-1993 school year are scheduled for Wednesday, June 10.

These examinations are intended to detect any significant health problems which would prevent a student from participating in athletics, as well as to meet the Michigan High School Athletic Association guidelines requiring an annual physical.

This is not intended to serve as a substitute for a comprehensive health evaluation by your regular physician. The physical examinations will be performed at the University of Michigan Family Practice Center, 775 S. Main St., according to the following schedule:

Last Name Begins With:	Report At:
A - E	2:00 P.M.
F - J	2:30 P.M.
K - O	3:00 P.M.
P - T	3:30 P.M.
U - Z	4:00 P.M.

The fee for the sports physical will be \$5 to be paid at the time of the examination. Sports physical forms will be available at the high school, Beach Middle school, and the athletic director's office, after May 30.

It is each student's responsibility to obtain a form, have a health history portion completed and signed by his/her parent or guardian, complete the school district athletic department portion of the form, and present the COMPLETED form to the physician at the time of the physical.

## Police Capture Escaped Prisoners

Two prisoners who escaped from Cassidy Lake Boot Camp and eluded authorities for several days were captured Saturday by police in Berrien county without incident.

Michael L. Blodgett, 20, and Robert E. Johnson, 21, were captured in the apartment of a friend. They had allegedly stolen a pick-up truck on Friday in the Jackson area.

The two escaped from the camp Sunday, May 24, and eventually robbed a Lyndon township house and stole

a car. They led police on a chase north on M-52 before eventually abandoning the vehicle on Tophith Rd. and hiding out in a swamp.

Police found the two, acting on a tip, in Hagar township.

## Dogs Take Title

(Continued from page ten)

"People tell me we have a chance to get through our regional because there aren't any dominant teams in it," Beard said.

"The girls are ready for it. Right after the tournament the first thing they said is we have to get back to work. They are handling all of this extremely well."

Chelsea plays the winner of the Carleton-Airport district beginning at noon.

In a tune-up for the post-season, the Bulldogs split with third-ranked Richmond last week. Petty suffered her first loss of the season in the first game, 4-2, while Cross pitched and won the second game, 9-7.

The first game was tied 1-1 going into the seventh inning. A two-out bloop single between shortstop and left put Richmond up 2-1, and a solid hit down the left field line brought home two more. Chelsea threatened in the bottom of the inning but scored once.

Chelsea led most of the way in the second game.

The Bulldogs are 32-5 for the season.

## Women's Softball League

Standings as of May 28

	W	L
BookCrafters	5	1
Vanston O'Brian	5	1
Palmer Ford	4	1
Cleary's Pub	3	2
Big Boy	3	3
Chelsea Pharmacy	2	2
Common Grill	1	4
Chelsea State Bank	0	5
Chelsea Hospital	0	6

## Basketball Club 3-on-3 Tourney Slated June 5-6

Chelsea Basketball Club's Second Annual 3-on-3 Tournament will be held this Friday and Saturday at Chelsea High school.

Play begins Friday at 7 p.m. and Saturday at 8 a.m. If needed, Sunday play will start at 10 a.m.

All games will be held in the high school gym.

For more information, contact Ed Brown at 475-7874.

Standard Want Ads Get Quick Results!



**NICKI PIASECKI** takes a strong swing at the ball during district tournament play Monday. Chelsea will play Monroe St. Mary's in the first round of regional play.

**ATTENTION VACATIONERS!**  
Replacement Tops for Tent Campers

**FOX TENT AWNING CO.**  
617 S. ASHLEY  
665-9126

313-475-2360 DAVID BOYER

★ ★ ALL-STAR ★ ★  
**SPORTS CARDS**  
BUY, SELL, TRADE

MON-SAT. 9-6  
SUNDAY 12-5

104 S. MAIN ST.  
CHELSEA, MI 48118

(313) 475-9656

**Pork Avenue Excavating**  
A Business Built on Old-Fashioned Values  
Driveways Basements Drainfields Grade Work

Doug Welshans  
3675 S. Fletcher Rd., Chelsea, Mich. 48118

**Convenient Weekly Delivery**  
in each Wednesday's mail  
for less than **29¢** each week  
The Chelsea Standard

BE CONCERNED

**CITIZENS**  
INSURANCE COMPANY OF AMERICA  
Member of The Hanover Companies

**Palmer Insurance**  
3074 Baker Road  
Dexter, Michigan 48130  
426-5047

**SPECIAL DISCOUNTS FOR SENIORS - TEACHERS - NON-SMOKERS**

Independent Insurance Agent

★ ★ ★ ★ ★

**This Is Where American Value Starts Rolling!**

Now Only **\$16,725**

Now Only **\$18,215**

**PALMER FORD-MERCURY**  
222 S. Main St., Chelsea

**Mercury Sable and Sable Wagon. Safety And Value First.**

**Sable GS**

**Standard Features Include:**  
3.0-liter V-6 engine • Sequential multi-port electronic fuel injection • Power rack-and-pinion variable assist steering • Air conditioner • Tinted glass • Tilt steering column • Driver-side air bag Supplemental Restraint System

**Option Package 451B Includes:**  
Fingertip speed control • Electric rear window defroster • Power side windows • Power lock group • Electronic AM/FM stereo cassette radio • 6-way power driver's seat • Light group

Manufacturer's Suggested Retail Price	\$21,452*
Option Package Savings	\$700**
Cash Back	\$500***
Dealer Discount	\$1,557
Total Savings	\$2,757
Palmer Ford-Mercury Price	\$16,725*

**Sable Wagon**

**Standard Features Include:**  
3.0-liter V-6 engine • Sequential multi-port electronic fuel injection • Power rack-and-pinion variable assist steering • Air conditioner • Tinted glass • Tilt steering column • Driver-side air bag Supplemental Restraint System

**Option Package 461B Includes:**  
Fingertip speed control • Electric rear window defroster • Power side windows • Power lock group • Electronic AM/FM stereo cassette radio • 6-way power driver's seat • Light group

Manufacturer's Suggested Retail Price	\$21,508*
Option Package Savings	\$965**
Cash Back	\$500***
Dealer Discount	\$1,828
Total Savings	\$3,293
Palmer Ford-Mercury Price	\$18,215*

\*Manufacturer's Suggested Retail Price, excluding title and taxes. \*\*Package savings based on M.S.R.P. of packages vs. M.S.R.P. of options purchased separately. \*\*\*For \$500 cash back from Lincoln-Mercury, take new vehicle retail delivery from dealer stock by 6:30 '92. See dealer for details. Some units must be ordered.

**PALMER FORD-MERCURY**  
222 S. Main St., Chelsea Ph. 475-1301



# Church Services

**Assembly of God**  
FIRST ASSEMBLY OF GOD  
1600 Old US-12, Chelsea  
The Rev. N. James Massey, Pastor.  
Every Sunday—  
9:45 a.m.—Sunday school.  
10:45 a.m.—Sunday morning worship, and children's services.  
7:00 p.m.—Evening service.  
Every Wednesday—  
7:00 p.m.—Mid-week services.

**CHELSEA CHRISTIAN FELLOWSHIP**  
337 Wilkinson St.  
Wm. Matthews, Pastor  
Church tel. 475-8305  
Every Sunday—  
9:30 a.m.—Overcomers Worship Service.  
9:30 a.m.—Coffee, juice and fellowship.  
10:00 a.m.—Sunday school for all ages.  
10:50 a.m.—Worship service and Children's Church.  
6:00 p.m.—Evening Service.  
Every Wednesday—  
7:00 p.m.—Family Night.  
Van pick-up available for Sunday morning and Wednesday evening.

## Baptist

**FIRST BAPTIST CHURCH OF GREGORY**  
The Rev. Richard Mathew, Pastor  
Every Sunday—  
9:30 a.m.—Sunday school.  
11:00 a.m.—Morning worship.  
7:00 p.m.—Evening worship.  
Every Wednesday—  
7:00 p.m.—Mid-week service.  
8:00 p.m.—Choir practice.

**NORTH SHARON BAPTIST**  
Sylvan and Washburne Rds.  
Bill Winger, Pastor  
Every Sunday—  
10:00 a.m.—Sunday school.  
11:00 a.m.—Morning preaching service.  
Every Wednesday—  
7:30 p.m.—Bible study and prayer meeting.  
Nursery available at all services.

## Catholic

**ST. MARY**  
The Rev. Fr. David Philip Dupuis, Pastor  
Every Sunday—  
8:00 a.m.—Mass.  
10:00 a.m.—Mass.  
Every Saturday—  
12:00 noon-1:00 p.m.—Confessions.  
8:00 p.m.—Mass.

**Christian Scientist**  
FIRST CHURCH OF CHRIST SCIENTIST  
1883 Washburne Ave., Ann Arbor  
Every Sunday—  
10:30 a.m.—Sunday school, morning service.

## Church of Christ

**CHURCH OF CHRIST**  
1881 Old US-12, East  
Minister, R.D. Farnell  
Every Sunday—  
9:30 a.m.—Bible classes, all ages.  
10:30 a.m.—Worship service. Nursery available.  
8:00 p.m.—Worship service. Nursery available.  
Every Wednesday—  
7:00 p.m.—Bible classes, all ages.  
First and Third Tuesday of every month—  
7:00 p.m.—Ladies class.

## Episcopal

**ST. BARNABAS**  
2600 Old US-12  
(Directly across from the Fairgrounds)  
The Rev. Fr. Jerrold F. Beaumont, O.S.P.  
Every Sunday—  
10:00 a.m.—Worship and Holy Communion.  
10:00 a.m.—Church school, K-12.  
10:00 a.m.—Nursery.  
11:00 a.m.—Family coffee hour.  
Every Wednesday—  
6:30 p.m.—Light supper.  
7:30 p.m.—Exploration of selected issues.

## Free Methodist

**CHELSEA FREE METHODIST**  
7600 Wexler Rd.  
Mearl Braddy, Pastor  
G. Harry Bonney, Associate Pastor  
Every Sunday—  
9:30 a.m.—Ladies Bible study.  
8:30 p.m.—GLC Honor Council and All-Church picnic.  
Thursday, June 4—  
12:30-3:00 p.m.—Ladies Bible study.  
1:30-3:00 p.m.—Jing Buchanan harp concert.  
Saturday, June 6—  
10:00 a.m.—Adult Fellowship canoeing and picnic.

## Lutheran

**FAITH EVANGELICAL**  
8675 North Territorial Rd.  
The Rev. Mark Porinkai, Pastor  
Wednesday, June 3—  
7:00-9:00 p.m.—Ladies-Bible study.  
Sunday, June 7—  
9:00 a.m.—Sunday school.  
10:00 a.m.—Worship with Lord's Supper.  
Postlude sermon.  
Wednesday, June 10—  
Ladies Bible study picnic.  
OUR SAVIOR LUTHERAN  
1818 S. Main, Chelsea  
The Rev. Franklin H. Giesel, Pastor  
Thursday, June 4—  
1:00 p.m.—Bible study.  
Sunday, June 7—  
9:30 a.m.—Worship with Communion.  
6:00 p.m.—Parent/youth workshop—"Look Who's Talking."

**ST. JACOB EVANGELICAL LUTHERAN**  
12601 Rietmiller Rd., Grass Lake  
The Rev. James S. Fischer, Pastor  
Every Sunday—  
9:30 a.m.—Sunday school, Family Bible Study.  
10:45 a.m.—Worship service.

**ST. THOMAS LUTHERAN**  
10001 W. Ellsworth Rd.  
(9 miles south and 3 miles west of Dexter)  
The Rev. John Riske, Pastor  
Sunday, June 7—  
9:30 a.m.—Worship service with Holy Communion.

**TRINITY LUTHERAN**  
5758 M-36, three miles east of Gregory  
Richard G. Gentner, Sr., Pastor  
Every Sunday—  
8:00 a.m.—Worship.  
9:30 a.m.—Sunday School and Bible Class.  
10:45 a.m.—Worship.  
Communion 8 a.m. first and third Sunday, 10:45 a.m. second and fourth Sunday.

**ZION LUTHERAN**  
E.L.C.A.  
Corner of Fletcher and Waters Rd.  
The Rev. Mark Weirauch, Pastor  
Wednesday, June 3—  
1:30 p.m.—Women of Zion. Aukee's presentation.  
8:30 p.m.—Supper.  
7:30 p.m.—Aukee missionary presentation.  
Saturday, June 6—  
9:30 a.m.-1:00 p.m.—Church Council retreat.

**Methodist**  
**SALEM GROVE UNITED METHODIST**  
3320 Notten Rd.  
The Rev. Jim Paige  
Every Sunday—  
9:30 a.m.—Church school.  
10:30 a.m.—Morning worship.  
**FIRST UNITED METHODIST**  
Parks and Territorial Rds.  
Pastor Wayne Miller  
Every Sunday—  
9:30 a.m.—Worship service.  
10:00 a.m.—Sunday school.

**WATERLOO VILLAGE UNITED METHODIST**  
818 Washington St.  
Pastor Wayne Miller  
Every Sunday—  
10:00 a.m.—Sunday school.  
11:15 a.m.—Worship service.

**FIRST UNITED METHODIST**  
128 Park St.  
The Rev. Dr. Jerry Parker, Pastor  
Wednesday, June 3—  
9:30 p.m.—Prayer Group.  
7:15 p.m.—Study Group.  
Thursday, June 4—  
6:30 p.m.—Softball season begins.  
Sunday, June 7—  
9:15 a.m.—Crib nursery opens.  
9:30 a.m.—Worship service.  
Church school for preschoolers and Kindergartners (fall 1992).  
10:00 a.m.—Enrichment Time, first through fourth graders (fall 1992).  
10:30 a.m.—Fellowship Time.  
10:35 a.m.—Crib Nursery closes.  
Tuesday, June 9—  
6:30 p.m.—Work Area on Education picnic.  
Janice Manning's home.  
Wednesday, June 10—  
6:30 p.m.—Prayer Group.  
7:15 p.m.—Study Group.

**METHODIST HOME CHAPEL**  
Every Sunday—  
9:30 a.m.—Worship service.

**NORTH LAKE UNITED METHODIST CHURCH**  
14111 North Territorial Road  
The Rev. Wayne Hawley, Pastor  
Every Sunday—  
9:30 a.m.—Church school.  
10:30 a.m.—Worship service.  
11:30 a.m.—Fellowship time.  
6:00 p.m.—Youth Group.

**SHARON UNITED METHODIST**  
Corner Pleasant Lake Rd. and M-52  
The Rev. Peggy Paige, Pastor  
Every Sunday—  
10:00 a.m.—Sunday school.  
11:00 a.m.—Worship service.

**CHURCH OF JESUS CHRIST OF LATTER-DAY SAINTS**  
1530 Freer Rd.  
Sam Skidmore, branch president  
517-456-7876 or leave a message at 475-1778  
Every Sunday—  
9:30-10:20 a.m.—Adult and Youth Sunday.  
9:30-11:15 a.m.—Primary School.  
10:25-11:15 a.m.—Priesthood and Relief Society.  
11:20-12:30 p.m.—Sacrament meeting.

**Non-Denominational**  
**CHELSEA HOSPITAL MINISTRY**  
Every Sunday—  
10:00 a.m.—Morning service, Chelsea Community Hospital Chapel.  
**COVENANT**  
50 N. Freer Rd.  
The Rev. Siegfried S. Jonsson, Pastor  
Every Sunday—  
9:00 a.m.—Church school.  
10:30 a.m.—Worship.

Subscribe Now for home delivery!  
We bring you the news  
You NEED to know

**CHELSEA FULL GOSPEL**  
11452 Jackson Rd. (Lima Town Hall)  
John & Sarah Grosser, Pastors  
475-7379  
Every Sunday—  
10:15 a.m.—Intercessory Prayer.  
11:00 a.m.—Morning worship.  
8:00 p.m.—Evening worship.  
Every Wednesday, Family Night—  
7:00 p.m.—Church school classes for all ages.

**IMMANUEL BIBLE**  
145 E. Summit St.  
Ron Clark, Pastor  
Every Sunday—  
9:45 a.m.—Sunday school, nursery provided.  
11:00 a.m.—Morning worship, nursery provided.  
6:00 p.m.—Evening worship.  
Every Wednesday—  
7:00 p.m.—Family hour, prayer meeting and Bible study.

**MT. HOPE BIBLE**  
12284 Trust Rd., Grass Lake  
The Rev. Joseph A. O'Neill, Pastor.  
Every Sunday—  
10:00 a.m.—Sunday school.  
11:00 a.m.—Morning worship.  
8:00 p.m.—Evening service.  
Every Wednesday—  
7:00 p.m.—Bible study.

**ST. VLADIMIR ORTHODOX CHURCH**  
The Rev. Fr. Paul Karas, Pastor  
6900 Jackson Rd.  
(between Steinbach and Dancer Rds.)  
Sunday Services—  
9:30 a.m.—Hour.  
9:30 a.m.—Holy Confession.  
10:00 a.m.—Divine Liturgy.

**NEW LIFE CHRISTIAN CENTER**  
50 Freer Rd. (Covenant church)  
Pastors Erik & Mary Hansen  
Every Sunday—  
12:30 p.m.—Praise, worship, Children's Church.  
6:00 p.m.—In home meetings.  
1st Monday of the month—  
7:00 p.m.—Women of Faith meets in homes.  
Every Thursday—  
7:00 p.m.—Praise and prayer.

**Presbyterian**  
**FIRST UNITED PRESBYTERIAN**  
Unadilla  
The Rev. Mary Groty  
Every Sunday—  
9:30 a.m.—Sunday school.  
11:00 a.m.—Worship service.

**United Church of Christ**  
**BETHEL EVANGELICAL AND REFORMED**  
Freedom Township  
The Rev. Roman A. Reineck, Pastor  
Every Sunday—  
10:00 a.m.—Worship service.

**CONGREGATIONAL**  
121 East Middle Street  
The Rev. J. Keith Roberson, Interim Minister  
Office hours: Monday-Friday, 9 a.m. - 12 p.m.  
Every Sunday—  
9:30 a.m.—Eighth Grade Confirmation Class.  
10:00 a.m.—Worship.  
10:00 a.m.—Sunday school, K-7. Nursery provided.  
11:00 a.m.—High School Confirmation Class.  
Last Monday of the month: coffee hour after worship.  
Every Thursday—  
7:00 p.m.—Choir practice.

**ST. JOHN'S**  
Rogers Corners, Waters and Fletcher Rds.  
The Rev. Nancy Doty, Pastor  
Every Sunday—  
9:00 a.m.—Worship service, Sunday school.

**ST. JOHN'S EVANGELICAL AND REFORMED**  
Francisco  
The Rev. Michael Pennanen  
Every Sunday—  
10:30 a.m.—Sunday school and worship service.  
First Sunday of every month—  
Communion.

**ST. PAUL**  
The Rev. Erwin R. Koeh, Pastor  
Wednesday, June 3—  
7:30 p.m.—Last Chancel Choir rehearsal.  
Saturday, June 6—  
Christian Education Work Day.  
Sunday, June 7—  
9:00 a.m.—Sunday school—7th, 8th, senior high, adults.  
10:30 a.m.—Worship service.

Physicians put in an average of 52 hours per week on patient care activities in 1991.

**Don't be a heartbreaker**  
Eat less saturated fat.  
  
**American Heart Association**  
WE'RE FIGHTING FOR YOUR LIFE



CONFIRMATION CLASS: Zion Lutheran church's 1992 confirmation class affirmed their baptismal faith on May 17. Pictured are Laura Koengeter, Sarah Heller, Damon McLaughlin, and Joshua Freysinger, with Pastor Mark Weirauch.



KNIGHTS OF COLUMBUS and K. of C. Auxiliary recently presented scholarships at their Baccalaureate Breakfast. From left are auxiliary president Pat Zangara, scholarship winners Wendy Bell, Sarah Devine, Joe Hafner, and Ben Hurst, and Grand Knight Ken Unterbrink.

# K-C Members Honor Graduates At Baccalaureate Breakfast

Chelsea Knights of Columbus Council 3092 held their annual Baccalaureate breakfast for the graduating seniors of St. Mary's and their parents on Sunday, May 24. Twenty-eight seniors were honored at the breakfast, and approximately 75 people were in attendance. Guest speaker was Chelsea attorney Terrance O'Hagan, who is currently a candidate for Washtenaw County Prosecuting Attorney. O'Hagan reminisced about growing up in the 40's and 50's, and pointed out that the family values that were passed along to him in his generation are just as valid today as they were in his time. Four seniors received \$250 college scholarships from the Knights and Ladies Auxiliary. They are Wendy Bell, Sarah Devine, Joseph Hafner, and Ben Hurst. The scholarships were presented by Grand Knight Kenneth Unterbrink and Auxiliary Chairwoman Pat Zangara. St. Mary's Youth Ministry director Mary Lou Setta presented several graduates with program leadership awards. Sharing the Tina Kenney Servant Leader Award were Thomas Richards-Bragalone and Timothy Bowers. Sr. Patricia Weigang also received special thanks and recognition from the Knights and Auxiliary for her 20 years of service to St. Mary's parish as director of religious education. The Knights of Columbus are proud of the graduating class of 1992, and extend their congratulations to all of the graduates in the Chelsea community.

**Chelsea Church of Christ**  
13661 Old U.S. 12 - 475-8458  
**Vacation Bible School**  
**JUNE 8 - 12**  
"Standing on the Promises of God"  
7pm until 8:30pm each night  
*You are invited*



*A Friendly Church*  
**Come Worship With Us**  
*Bring your friends*  
SUMMER WORSHIP SCHEDULE  
9:30 a.m.  
The Rev. Dr. Jerry Parker, Pastor  
**First United Methodist Church**  
128 Park Street, Chelsea Ph. 475-8119

**CHELSEA CHRISTIAN FELLOWSHIP**  
*Invites you to come and hear*  
**FOUR SPECIAL MESSAGES**  
*by Pastor Matthews*  
*entitled*  
**GRACE: IT'S SIMPLY AMAZING**  
Parts I, II, III & IV  
*Understanding the concept of God's grace can be life changing!*  
**4 Consecutive Sundays**  
**Beginning JUNE 7th**  
Now Sun. a.m. service times: 8 a.m. and 10:50 a.m.  
**Chelsea Christian Fellowship**  
337 Wilkinson  
*The Full Gospel Family Church*

**Are your gutters and downspouts ready to be replaced?**  
Free estimates  
Seamless aluminum guttering—7 colors available  
  
**R.D. Kleinschmidt Inc.**  
19860 Sharon Valley Rd. Manchester 428-8836

Interior • **Car Detailing**  
As low as \$16.95  
• **Lawn Mowing**  
FREE ESTIMATES  
**Sonshine Enterprises**  
475-3873 Rachel or Bill, Jr.  
• We pick up and deliver •

When you see news happening  
call 475-1371!

An NAIC Service **NAIC**  
**Today's Investor**

Q. I like to invest in companies that have businesses in several industries. Do you think this is a good idea? Would you name and describe several such companies for me?

A. Such companies are usually called conglomerates. The merits of each case have to be carefully examined. There can be some interaction between various industries represented that can tend to smooth out fluctuations in profits resulting from the economic cycle. However, there is a limit to how many different industries management can handle effectively. Growth for growth's sake, by repeatedly acquiring companies in different industries, is a strategy I would question.

The best conglomerates are those which delegate management of the individual divisions to a management team. The individual divisions are then run as if they were smaller companies.

Examples of conglomerate-type companies which have reasonable records include the following.

Hillenbrand Industries—Health care beds, caskets, luggage, security locks and funeral insurance. Growth is about 13% a year. Quality is good.

JWP, Inc.—The company provides engineering, construction, computer and mainframe services to a variety of customers. It owns two water utilities and a chain of computer stores. Quality is above average and growth is about 19% a year.

Dover Corp.—is an example of a conglomerate in which each division manages its own business. It makes elevators, aerospace products, flow meters, bearings, pumps, valves, sucker rods and electronic products. Quality is high and long-term growth about 10% a year.

Teleflex is involved with aerospace, corrosion resistant high temperature coatings for gas turbine engines, medical products, controls for pleasure marine vessels, controls for the automotive market, as well as products for fluid transfer and outdoor power equipment. Quality is about average and annual growth about 15% a year.

**Investment Idea for Today's Investor**  
Sara Lee Corporation (SLE), NYSE, is a diversified international consumer packaged foods producer. Annual sales exceed \$12 billion. Growth of sales and earnings is about 12% a year. The \$1.00 dividend yields 2.1% at the recent price of 48-1/2. The 52-week price range is 58-1/8 to 37-1/2.

Sara Lee is typical of high quality growth stocks with good predictability of earnings that have been dumped by institutional investors in their shift to economically sensitive cyclical companies in the hopes of a recovery from the recession.

By **Ralph L. Seger, Jr.**  
CFA  
President  
NAIC Investor  
Advisory Service



Mr. Seger welcomes your questions and comments, but will answer them only through this column. Readers who send in questions on a general investment subject or on a corporation with broad investor interest and whose questions are used, will receive a complimentary one-year's subscription to the investment magazine, Better Investing. For a sample copy of Better Investing or information about investment clubs, write: Today's Investor, P.O. Box 220, Royal Oak 48068.

**Super Savers**

0% FINANCING AND UP TO \$300 CASH BACK\* OR \$600 REBATE\*

**Lennox High Efficiency Air Conditioner**  
Lennox high efficiency air conditioners are designed to cut up to 60% off your cooling bills. Without cutting down on your cooling comfort.

**Lennox Pulse™ Gas Furnace**  
• Delivers 96¢ worth of heat for every energy dollar.  
• Backed by the industry's first Limited Lifetime Warranty.

**LENNOX**  
\*Limited time offer. Includes utility rebate. Call us for details.

**HIGH EFFICIENCY AIR CONDITIONERS**  
UP TO 14.0 SEER

**G14 PULSE™**  
UP TO 96.0% AFUE  
665-8651  
Fuller Heating Co.  
777 S. Washtenaw  
Ann Arbor

**HEATING FULLER COOLING**  
The Most Trusted Name for Heating and Cooling Since 1945.

**ORTHODONTIST**  
**RAYMOND P. HOWE**  
D.D.S., M.S.

515 South Main Street  
Chelsea  
Telephone 313-475-2260

Examination Appointment without charge

**Crafts Castoffs Collectibles**

• **RED CROSS** •  
**TRIPLE-C MARKET**

Sunday, June 7, 1992  
9 AM - 5 PM  
Washtenaw Farm Council Grounds  
Ann Arbor-Saline Rd.  
Saline

Find antiques, crafts and bargains!

Admission \$2  
(Children 12 and under free)

LIMITED BOOTH SPACE Still Available! CALL 475-15300

**UNIGLOBE**  
**Chelsea Travel**

Ph. 475-3110

Monday-Friday  
8:30 a.m.-5 p.m.  
Evenings and Saturday  
by appointment

In the  
**CHELSEA SHOPPING CENTER**  
1070 S. Main St., Chelsea

**ANTHONY M. SENSOLI, MD**  
Eye Physician and Surgeon

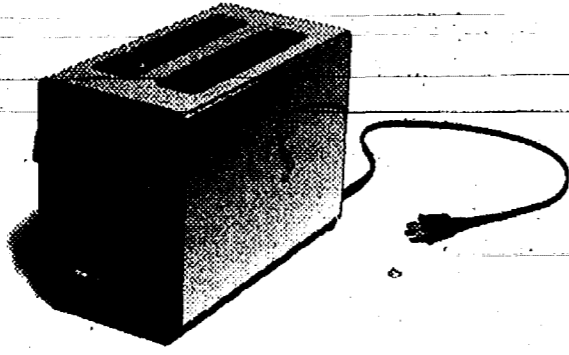
- State-of-the-art surgical services
- Cataract implant and laser surgery
- Glaucoma laser surgery
- Evening office hours
- Comprehensive eye exams

APPOINTMENTS AND INFORMATION  
313/475-5970

Middle Square Professional Building  
134 W. Middle St., Chelsea

If This Is All You Got For  
Opening A Checking Account,

You'll Be Glad To Know  
Something New Just Popped Up.



Why settle for a toaster when our Club 50 checking account butters you up with special bonuses, perks and discounts?

Club 50 offers savings of up to 50% on travel:

- Worldwide discounts on hotels, restaurants and movie admissions
- Cash bonuses on air fare, hotels and car rentals

Club 50 appeals to your practical side as well:

- Your first order of personalized checks is free.
- With a \$100 balance, you'll pay no service fees.
- You'll earn interest when you maintain a \$1000 balance.

ACCOUNT

You'll also receive:

- \$100,000 of accidental death insurance when traveling by licensed common carrier (plane, train, ship or bus)
- Free credit card protection
- Emergency cash advances
- Free key registration for lost keys
- Prescription drug discounts
- A financial newsletter, and more



If you're 50 or over and would like to learn more about our Club 50 checking account, give us a call. We'll plug you into a new kind of checking. Member FDIC.

Call 1-800-544-4703 or in  
Chelsea 475-1341  
Ann Arbor 769-8300  
Dexter 426-3913



# WISD To Seek Millage For Special Education

Monday's annual school elections will include a county-wide, 1.45 mill proposal from the Washtenaw Intermediate School District (WISD) for the funding of state-mandated special education programs in the county.

Special education is the major function of WISD. It also handles gifted and vocational education, testing, and other specialized education programs.

The money is needed, according to WISD, because local reimbursement by the state has stayed relatively level over the years, but costs have skyrocketed. In the last 10 years, WISD student population has increased from about 4,000 to 4,924 as of the end of 1991. That is more than 12 percent of the entire school population of the county (approximately 42,000), which includes Chelsea, Dexter, Man-

chester, Ann Arbor, Lincoln, Milan, Saline, Whitmore Lake, Willow Run, and Ypsilanti School Districts.

Locally, 287 students from Chelsea, 230 from Dexter, and 150 from Manchester are in special education programs, which includes classes for students with learning disabilities, emotional impairments, speech and language problems, and other mental or physical problems.

Each year, county school districts submit their special education budgets to WISD. They basically subtract state reimbursable expenses from each budget, then apply a percentage for county reimbursement. Each district receives the same percentage.

This year, according to John Dietz, assistant superintendent for personnel and finance at WISD, districts

were reimbursed about 65 percent of their costs this year. That percentage is projected to drop to 40 percent next year and gradually decrease to 22 percent by 1995-96 without new millage.

With new millage, WISD would reimburse 85 percent of costs for each of the next five years, Dietz said.

It's not a small amount of money. For example, without new millage, WISD would reimburse Chelsea \$378,284 next year. With the millage, Chelsea would get a total of \$700,366 next year and \$2,480,269 in additional funds over five years. The figures are similar for Dexter, which would get \$343,864 without the millage and \$714,688 with it.

Dietz said WISD projected certain inflation factors related to teaching salaries, supplies, and other costs, and assumed no increase in state reimbursement. The millage is designed to keep funding level for five years. WISD last passed a special education millage in 1987, for 1.5 mills.

Without the WISD millage, local school districts will be forced to use more of their general fund monies for special education. In Chelsea's case, the board of education has promised to roll back its operating millage by .5 mills if its request for 1.95 new mills is also passed by voters next Monday.

WISD, by law, may only seek permanent (charter) millages. The increase would push the WISD millage to 4.95 mills, which includes .255 mills for debt retirement.

Exports and imports of goods and services will continue to be the fastest growing categories of the gross national product over the 1990-2005 period, according to the Bureau of Labor Statistics. Exports, however, will grow faster than imports, unlike the 1975-1990 period.



DEXTER'S CHRIS WARD takes a hefty swing at a Chelsea Monday afternoon. The Dreadnaughts' season pitch in the semi-finals of the district tournament at ended with a 7-0 loss to the Bulldogs.

## Pinckney Area Man Participates in Marine Training Exercise

Marine Cpl. Michael C. Polh, son of Jeanne M. Cobb of 9058 Cedar Lake Rd., Pinckney, recently participated in a Combined Arms Exercise.

Polh participated in the exercise with 2nd Battalion, 3rd Marines, 1st Marine Expeditionary Brigade, Marine Corps Air Station, Kaneohe Bay, Hawaii, where he is currently assigned.

The month-long exercise, conducted at Marine Corps Air Ground Combat Center, Twentynine Palms, Calif., encompasses all the weapons available in the Marine Corps arsenal. Polh spent three weeks in a variety of live-fire exercises and small-unit maneuvers, which culminated into the CAX, a three-day realistic exercise set in an environment just short of actual combat.

The 1988 graduate of Pinckney High school joined the Marine Corps in July 1988.



## DEXTER MILL

3515 Central St., Dexter  
426-4621

9-3:30 Mon.-Fri. Thurs. till 6:30. 8-4:00 Sat.

# Purina DOG CHOW



Great Taste  
Great Tradition

Purina Dog Chow is the result of over 60 years of nutritional research, providing all the nutrients dogs need to be healthy and active. And Dog Chow is made with high quality ingredients, like meat and bone meal and whole grains of rice, corn and wheat. It has great taste so dogs will love every nutritious bite.

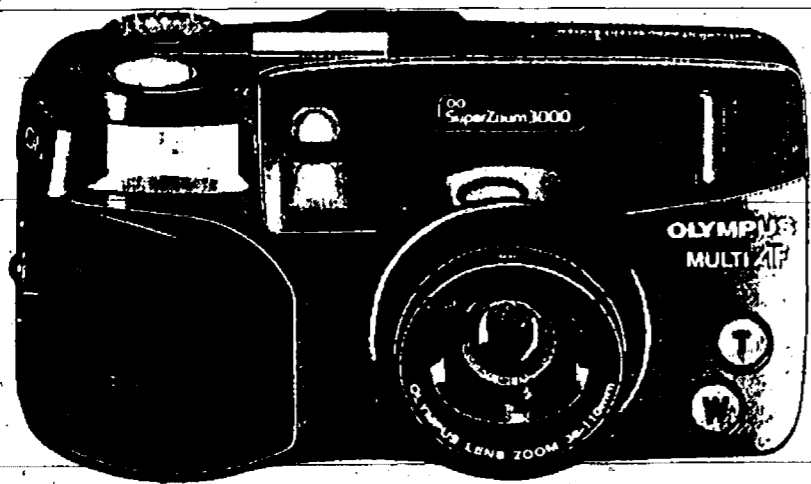
## DEXTER MILL

3515 Central St., Dexter

426-4621

9-3:30 Mon.-Fri. Thurs. till 6:30. 8-4:00 Sat.

A new era in  
zoom versatility.



## OLYMPUS SuperZoom 3000

A longer built-in zoom, a smaller camera, plus weatherproof versatility and features you won't believe. With so much going for it, the SuperZoom 3000 proves how far zoom cameras have come!

- Precision Olympus 3X 38-110mm power zoom lens -- an extraordinary range for a camera this size (only 10.8 oz)
- Advanced, ultra-precise 460-step, multi-beam autofocus
- Weatherproof for outdoor use in all weather conditions
- Great in any light -- multi-mode flash including full auto, Auto-S that greatly reduces red-eye, fill-in for daylight, and flash off
- Totally automatic: film load, advance, rewind, and speed setting

And SuperZoom 3000 "go-anywhere" features go on -- with everything from programmed auto-exposure to a convenient predictive autofocus for fast-moving subjects, optional remote control and more!

Discover the super benefits of the SuperZoom.

o proud parents  
diploma  
freedom  
olympus

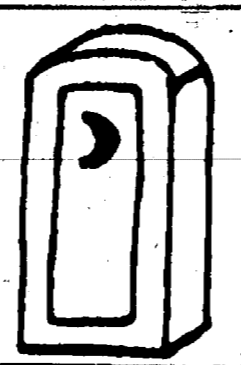
On Graduation Day, never miss another O.

## HURON CAMERA SERVICE

We repair all makes and models cameras & projectors

8060 Main St., Dexter Ph. 426-4634

Only 10 minutes from Ann Arbor, Chelsea & Pinckney



PICNICS  
GRADUATION PARTIES  
SPECIAL EVENTS

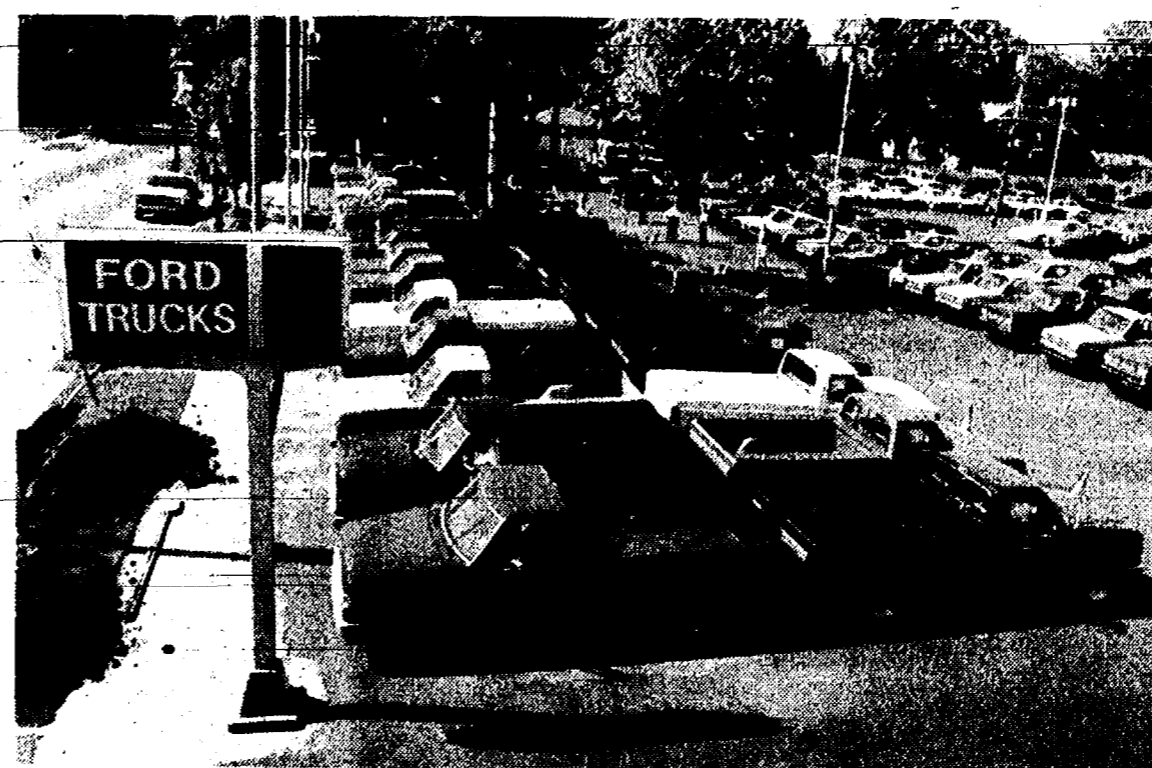
Call  
ANN ARBOR  
PORTABLE TOILETS

and Save Your Septic!

Reasonable Rates Ph. 741-9361

## 29th ANNUAL

# PICK-UP SALE



Over \$2,000,000.00 in Truck Inventory  
1992 Ranger Pick-up

# \$7599.00\*

F-Series, Aerostars, Vans, Bronco, Explorer at similar savings.

Manufacturer's Suggested Retail Price	\$9,190.00
SAVE	841.00
LESS REBATE	750.00
<b>YOUR PALMER PRICE</b>	<b>\$7,599.00*</b>

\*Plus tax, title, destination. Rebates assigned to Dealer.

**PALMER** FORD MERCURY  
Michigan's Oldest Ford Dealer

Vehicles described not necessarily as pictured.

# Prime Rib Every

Friday & Saturday 4-10

8oz. Cut

## \$8.95

Includes Baked Potato, Salad, Homemade Bread

5827 Jackson Rd. • Ann Arbor • 313-747-9595

No reservations necessary



Seafood • Pasta • Steak

Your advertising support  
makes this newspaper possible.

YOU GET: 1992 Ranger Pick-up

- 2.3L EFI I-4 Engine
- 5-Speed Manual Overdrive Transmission, Fully Synchronized
- Steel Belted All Season Tires
- Fold-away Outside Mirrors
- Removable Tailgate
- Bright Hub Covers
- Courtesy Lights
- Locking Glove Box
- Inside Hood Release
- Side Window Demisters
- Cluster Warning Lights
- Temperature, Oil Pressure, and Amp Gauges
- Color-keyed Sunvisors
- Trip Odometer
- Spare Tire
- Interval Wipers
- Front Bumper with Rub-strip
- Tinted Glass

**ACT NOW  
SAVE OVER  
\$1591.00**

Open M & Th 9-8; T, W, F 9-6; Sat 9-3

Service open Saturdays, too.

Chelsea • 475-1301 • Plenty of Parking

I-94 to M-52 1-1/2 miles downtown

Just Minutes Away









Card of Thanks 19

THANK YOU
South School and the 1992 Ice Cream Social committee would like to thank all those who made our event such a big success!

Legal Notice 21

MORTGAGE SALE—Default having been made in the terms and conditions of a certain mortgage made by JOHN D. VANBLANK and NANCY M. VANBLANK...

Legal Notice 21

STATE OF MICHIGAN
Probate Court
County of Washtenaw
CLAIMS NOTICE
Independent Probate
File No. 92-2899-IE

Lyndon Township Board Proceedings

Lyndon Township Board Meeting
May 12, 1992
Meeting called to order and minutes approved.

Lyndon Township Public Hearing and Board Meeting, May 1992
Public hearing called to order on Private Road Ordinance Variance request submitted by John & Darlene Calwell & James Utler.

Legal Notice 21

STATE OF MICHIGAN
In the Circuit Court for the County of Washtenaw
File No. 92-4893-NI
File No. 92-787-NI

At a session of said Court, held in the Washtenaw County Circuit Court, in the City of Ann Arbor, Michigan, on the 27th day of May, 1992.

At a session of said Court, held in the Washtenaw County Circuit Court, in the City of Ann Arbor, Michigan, on the 27th day of May, 1992.

Mich-CAN Statewide Ad Network

Land Contracts. Top dollar paid. Call Vic. Mortgage America. 1-800-748-0265.

4.91 Acres, Kalkaska 443 feet on County Road 571, Beautiful rolling Maple and Beech...

Basement Walls - We fix cracked or bulging walls, we do basement waterproofing - no digging - economical - guaranteed - free estimates.

Health & Wealth. Need 5 people capable of 6 figure income. Finest products for fat & cholesterol reduction.

Established Trucking Company has opening for experienced Owner Operators. Tractors must be 1989 or newer.

165' Lake Frontage - 20 minutes N.E. of Muskegon. Great for kids. 2600 sq. ft. 3 or 4 bedroom home on acre sized lot.

Myrtle Beach S.C. - Luxury Condominiums, Oceanfront - Oceanview, 2-3 bedrooms, private balconies, free 32 page color vacation brochure on lodging, affordable rates - Barefoot Vacations 1-800-845-0837.

Distributors Needed! "One Day Diet" is exploding in billion \$ industry. Commissions and overrides paid weekly.

Pizza Vending Machines. Get a big piece of the pie. 20 Hot Foods. 8 Choice locations provided.

Make Money selling the new "pest free" magnetic pest eliminator. It works and saves money. Dynamic Products, P.O. Box 723, Grand Blanc, MI 48439.

Drivers Take Charge... of your career and your life. Drive for J.B. Hunt and earn top pay and benefits.

Make A Friend...For Life! Scandinavian, European, Yugoslavian, South American, Japanese High School Exchange Students...

Got A Campground Membership Or Timeshare? We'll take it. America's most successful resort resale clearinghouse.

Cash Fast Equity Loan. All credit understood. No income verification. Past bankruptcy OK. Income property OK.

Taylor Waterstones® - Outside wood fired hot water furnaces. Heats your entire home and domestic hot water from a wood fire outside your home.

Friendly Home Parties Has Openings For Demonstrators. No cash investment. No service charge. High commission and hostess awards.

Tuition-Free Training For A Driving Career At Com Trans, Inc. Com Trans, Inc., is currently accepting applications for their tuition-free, employee training program.

Midwestern Consulting, Inc. 2045 Hogback Road Ann Arbor, Michigan 48105



TWO YEAR OLDS at Chelsea Children's Co-op Preschool and their moms recently enjoyed a bed-time day. They wore pajamas to school, brought their stuffed animals, and had cinnamon toast and juice for a snack.



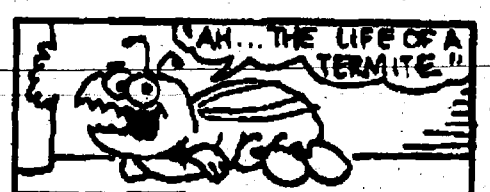
Richard D. Kleinschmidt (313) 426-4613 GENERAL CONTRACTOR Roofing - Siding - Carpentry - Seamless Aluminum Gutters 4785 Mast, Dexter, MI 48130

Charles E. Sullivan Plumbing Licensed Michigan Master Plumber 475-8114 Free Estimates Reasonable Rates

School Budget Hearing In accordance with the provisions of the Uniform Budget Act, notice is hereby given that a public hearing will be held on the 1992-93 budget for the Chelsea School District on Monday, June 8, at 7:00 p.m. in the Media Center, Beach Middle School, Mayer Drive.

ADVERTISEMENT FOR BIDS VILLAGE OF CHELSEA Sealed Bids for the Village of Chelsea 1992 Street Improvement Program will be received by the Village of Chelsea, 104 East Middle Street, Chelsea, Michigan 48118, until 1:00 o'clock p.m. Eastern Standard Daylight Savings Time of Monday, June 22, 1992, and then at said office publicly opened and read aloud.

VILLAGE OF CHELSEA MICHIGAN Suzanne C. Morrison, Village Clerk



The world's largest wooden building is the Hall of the Great Buddha in Nara, Japan.

Mich-CAN Statewide Ad Network

Decorating Den. No. 1 int'l. interior decorating franchise company expanding throughout Mich. Single and multiple unit franchises avail.

Free! To Anyone Receiving Payments on a land contract: Five facts you need to know. Call 24 hours, 1-800-428-1319; for recorded message.

A Doctor Buys Land Contracts and gives loans on Real Estate. Immediate service 313-335-5165 or 1-800-837-6166.

Place Your Statewide Ad Here! \$300 buys a 25 word classified ad offering over 1,700,000 circulation.

LYNDON TOWNSHIP BOARD MEETING TUESDAY, JUNE 9, 1992 - 7:00 p.m., at Lyndon Township Hall

AGENDA: 1) Multi-Cablevision agreement. 2) Reports, correspondence, and other business.

The next LYNDON TOWNSHIP PLANNING COMMISSION Meeting June 11, 1992-7:30 p.m., Lyndon Township Hall

LYNDON TOWNSHIP Linda L. Wade, Clerk

SYLVAN TOWNSHIP PLANNING COMMISSION Meeting to be held Thursday, June 11, 1992 7:30 p.m. at SYLVAN TOWNSHIP HALL 112 W. Middle Street, Chelsea, MI SYLVAN TOWNSHIP PLANNING COMMISSION Steven Kondzicky, Secretary

STATE OF MICHIGAN
In the Circuit Court for the County of Washtenaw
File No. 92-4893-NI
File No. 92-787-NI

At a session of said Court, held in the Washtenaw County Circuit Court, in the City of Ann Arbor, Michigan, on the 27th day of May, 1992.

At a session of said Court, held in the Washtenaw County Circuit Court, in the City of Ann Arbor, Michigan, on the 27th day of May, 1992.

At a session of said Court, held in the Washtenaw County Circuit Court, in the City of Ann Arbor, Michigan, on the 27th day of May, 1992.

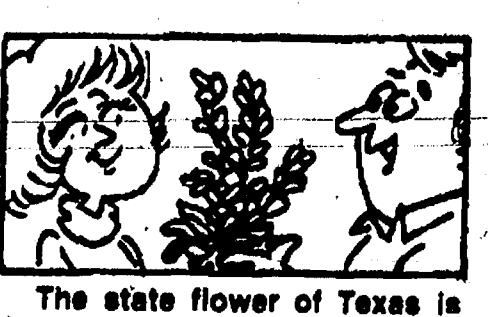
At a session of said Court, held in the Washtenaw County Circuit Court, in the City of Ann Arbor, Michigan, on the 27th day of May, 1992.

At a session of said Court, held in the Washtenaw County Circuit Court, in the City of Ann Arbor, Michigan, on the 27th day of May, 1992.

At a session of said Court, held in the Washtenaw County Circuit Court, in the City of Ann Arbor, Michigan, on the 27th day of May, 1992.

At a session of said Court, held in the Washtenaw County Circuit Court, in the City of Ann Arbor, Michigan, on the 27th day of May, 1992.

At a session of said Court, held in the Washtenaw County Circuit Court, in the City of Ann Arbor, Michigan, on the 27th day of May, 1992.



The state flower of Texas is the bluebonnet.

# + AREA DEATHS +

## Lawrence A. Porath

Munith  
Lawrence Albert Porath, age 90, 9054 Kennedy Rd., Munith, died May 24, 1992 at the Chelsea Retirement Community.

He was born May 16, 1902 in Page, Neb., the son of Frederic and Edith (Larsen) Porath. On April 22, 1922 he married Regina Jerde, and she preceded him in death in 1980.

Survivors include four sons and their wives, Warren and Rosetta of Chelsea, Don and Mary of Chelsea, Lawrence and Janet of Houghton Lake, and Harold and Joan of Munith; 18 grandchildren, 30 great-grandchildren, and three great-great-grandchildren; and three brothers, Walter, Ed, and Harold. He was also preceded-in-death by a son, Royce, in 1954.

Mr. Porath was a farmer and worked for numerous machine shops in the Jackson area. He was a member of the Munith Church of the Nazarene, the Farm Bureau, and the Waterloo Area Senior Citizens.

Funeral services were held May 28 at the Caskey Funeral Home, with the Rev. Robert Marston officiating. Burial followed in Pleasant Grove Cemetery, Henrietta township.

Memorial contributions may be made to the Chelsea Retirement Community.

## Charles P. Herrington

Chelsea  
Charles P. Herrington of Chelsea, age 80, died Thursday morning, May 28, 1992 at Medi-Lodge in Howell. He was born Feb. 21, 1912 in Hannibal, Mo.

Mr. Herrington had been a resident of Chelsea since 1978, having previously lived in Taylor and Arkansas. He was a member of the Belleville Masonic Lodge and the Shrine.

Mr. Herrington was retired from Chrysler Corp. and was a veteran of WW II, serving in the U.S. Navy.

He was married in Toledo, O., on March 27, 1948 to Marguerite I. Wilkes and she survives, as do his two daughters and their husbands, Ilene and Francis Thibault of Chelsea, and Lois and Leonard Ryan of Carleton; five grandchildren and five great-grandchildren; one sister, Janie Sims of Hannibal, Mo., and several nieces and nephews.

He was preceded in death by two sisters, Marie Viles, Mary Ellen Dmytryck, and one brother, Elmer Herrington.

Funeral services were held Saturday, May 30, 1992 at 1 p.m. from the Staffan-Mitchell Funeral Home with the Rev. James Paige of Salem Grove United Methodist church officiating. Burial was in Oak Grove Cemetery, Chelsea.



JEFF HOLZHAUSEN, described by high school principal Ron Mead as the "heart and soul" of the senior class, gave a humorous speech questioning whether his high school years were really the best of his life.



AMY MITCHELL gave an inspirational speech as part of Sunday's Chelsea High school commencement.

## Births

A daughter, Haylay Marie, Thursday, May 14, to Kim and Robert Walker of Gregory. Ashley Ann, 7½ years, is Haylay's sister. Grandparents are Mrs. Eileen Walker of Joslin Lake and the late Walter Walker, David and Sandy Graber of Michigan Center and Robert Barth of Chelsea. Great-grandparents are Mr. and Mrs. Orville Graber of Clearwater, Fla. Great-great-grandparents are Mr. and Mrs. Emmett Walker of Seebing, Fla.

A daughter, Alexandra Elizabeth, Thursday, May 21, to Michael and Sonya Murphree of Howell. Maternal grandparents are Richard and Margaret Steele of Chelsea. Paternal grandparents are Dalton and Sue Murphree of Howell. Great-grandparents are Hoss and Montesse Murphree of Blountsville, Ala., Elsie Wright of Morristown, Tenn., Edd Marshall of Chelsea, Joseph and Dorothy Steele of Kalamazoo.

A daughter, Angela Marie, Wednesday, May 6 to Rick and Cindy Thurston of Grass Lake. Angela has a brother, Larry, who is 5. Grandparents are Mr. and Mrs. C. MacCauley of Grass Lake and Mrs. Barbara Day of Salem, Ky.

A daughter, Chelsea Marie, Saturday, April 25, to Fred and Charlene (Lobdell) Knapp of Naval Air Station, Sigonella, Sicily. Chelsea Marie was born in the U.S. Naval Hospital in Naples, Italy. Nicole Dawn is sister of Chelsea Marie. Maternal grandparents are John Shugg of Harrison, and the late Diana Lobdell. Paternal grandparents are Maxine Knapp of Channing, and John Knapp of White Pine. Maternal great-grandmothers are Arlene Lobdell of Dexter and Tressie Shugg of Ann Arbor.

A son, Nathaniel Jacob, Sunday, May 17, to Jeff and Sheila Branham of Chelsea. Maternal grandparents are Ray and Nedra Tarasov of Chelsea. Paternal grandparents are Ron and Dee Branham of Ann Arbor and David and Donna Bacon. Nathaniel's brother is Joshua, 3.

There were 1,908 physicians in general practice in Michigan in 1991. During the same year, 4,385 were in surgical specialties, 5,015 practiced in other specialties, including anesthesia and emergency medicine.

## Edwin F. Smith

Ann Arbor  
(Formerly of Manchester)  
Edwin F. Smith of Ann Arbor, formerly of Manchester, age 87, died at his home on May 31, 1992 after an extended illness.

Edwin was born in Detroit on Jan. 10, 1925, the son of Arthur and Alma (Racine) Smith.

In 1950 Edwin was married to Shirley King and she survives.

He was a member of Local No. 1284 UAW and retired from the Chrysler Proving Grounds in 1980 after 30 years of service.

Edwin loved flying and spent many years as a private pilot and was one of the founding members of the Yankee Air Force based at Willow Run.

Edwin is also survived by his mother, Alma Smith of Port Huron; one son, Gregory and Christina Smith of Belleville; three daughters, Leslie Burrell of Belleville, Kathy and Brian Conley of Gregory, Michelle Smith of Ann Arbor; three grandchildren; and dear friend George Gallup; and one sister, Marie Kilmner of Emmett.

He was preceded in death by his father and two brothers.

Funeral services will be held Wednesday, June 3 at 11 a.m. from the Jenks-Braun Funeral Home with the Rev. Richard Johnson officiating. Interment will take place in Oak Grove Cemetery, Manchester.

"What we do upon some great occasion will probably depend on what we already are; and what we are will be the result of previous years of self-discipline."

—H.P. Liddon

## Chelsea Woman To Spend Summer In Guatemala City

Lenae Rinn of Chelsea, daughter of Dianne and John Rinn, will spend a portion of her summer in Guatemala City as part of her educational program at Moody Bible Institute of Chicago.

Rinn, a 1988 graduate of Grace Bible Christian school in Ann Arbor, is a senior at the institute enrolled as an international ministries major.

From June 8 and July 18 she will work primarily with abandoned children who live on the streets of Guatemala City in cardboard shacks. She will be involved in food and clothing distribution, and will assist in Bible classes for children. Her work is under the supervision of Action International Ministries.

During the regular school year, Rinn was also involved in weekly field service in Chicago.

## Bush Rd. Work Scheduled To Begin

A portion of Bush Rd. in Sylvan township will be closed to through traffic through the beginning of August, according to the Washtenaw County Road Commission.

The county will be reconstructing the road between Ivey and Pierce Rds. Local traffic and access to driveways will be maintained. However, mailboxes and newspaper boxes will be temporarily relocated and placed in groups.



### PIERCE PARK PLAYGROUND PROJECT

Make a lasting contribution to the community's children.

**KIDS ARE SPECIAL PEOPLE**

CONTRIBUTE TO THE PIERCE PARK PROJECT !!!

LET'S BUILD IT FOR THIS SUMMER !

Contributions to "Pierce Park Playground Project"  
P.O. Box 475  
Chelsea, Michigan 48118



# GEE FARMS

14928 Bunker Hill Rd., Stockbridge (517) 769-6772  
OPEN: 8 a.m. to 9 p.m.

Acres and acres of Nursery stock with many unique and unusual and common varieties to choose from.

20% NURSERY DISCOUNT AVAILABLE	Annual Vegetable Flats and Perennial Flats Herbs	Fresh Asparagus
---	---	--------------------

FARM-BAKED DOUGHNUTS  
HAND-DIPPED ALL-STAR ICE CREAM

## Students May Face Variety of Charges

Ten current and former Chelsea High school students may face felony charges ranging from breaking and entering to concealing stolen property in connection with vandalism at the high school on May 22. Warrants have been filed with the county prosecutor's office.

All 10 students, some of whom graduated Sunday, admitted their roles in the incidents to Chelsea police recently.

The students partially cut a large tree with an ax, cut down small bushes, pounded a metal door with an ax, spread stolen water softener salt on the football field, broke outdoor skylights, and stole several cellos, which have since been returned. It was all apparently supposed to have been a year-end prank.

Assistant superintendent Fred Mills estimated the damage at \$3,400, including \$1,000 for the tree, which he said could be worth much more.

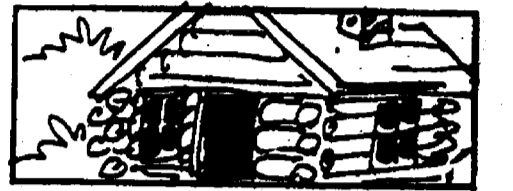
Police said the students parked their cars at nearby Chelsea Community Hospital.

The students, at least some of whom

had apparently been drinking, police said, left from the home of one of the students at about 2 a.m. However, only eight went to the school. The two who stayed behind may be charged for concealing the stolen cellos and other related mischief.



Week of June 3-5  
Wednesday, June 3—Brown bag—no milk will be provided.  
Thursday, June 4—½ day—no lunch served.  
Friday, June 5—No school.



James A. Garfield was the last U.S. President (1881) to be born in a log cabin.

Dennis M. McDonald CPA

Specializing in Tax Preparation and Monthly Accounting for Small Business

747-8882 3001 South State St. # 1010  
475-3228 Ann Arbor, MI. 48108

**Pennington LP GAS**

"Count on us to keep the heat on!"

13400 M-52  
P.O. Box 490  
Stockbridge, MI 49285  
(517) 851-7577  
Toll Free 1-800-274-5599

## Cool Your Quarters For Pennies.

A Ruud™ air conditioner can cool your living quarters reliably and efficiently. That's why homeowners all across America depend on Ruud. High efficiency and low energy bills. That's Ruud.

Call your Ruud dealer today about the penny-pinching, and very cool performance of Ruud air conditioning units.

**BEE LINE HEATING & COOLING**  
"The Specialist"

Sales • 24 Hour Service • Installation  
517 596-2729  
Please Call for a Free Estimate

ROBERT BRABBS  
8780 Moeckel Rd., Grass Lake, MI 49240

To Get Comfortable, You Gotta Get Ruud.

RE-ELECT

# JOHN EISENBEISER

— AND —

# JOE REDDING

Chelsea Board of Education

We would appreciate your support and opinions

Paid for by the Committees to Elect Joseph M. Redding & John Eisenbeiser



**JASON EYSTER** and his daughter, **Athena**, planted a variety of donated annuals and perennials in the new concrete planter next to the Chelsea Post Office last week. Some of the plants will grow several feet tall in what should turn out to be a colorful annual display downtown. Flowers were donated by area gardeners.

## Garden Club Seeks Help With Flower Bed Plants

Chelsea Garden Club has accepted the responsibility of planting and maintaining the new island flower bed on the corner of Main St. and Park St., next to the post office. This large concrete planter—seven feet in diameter—is part of the Downtown Development Association's sidewalk renovation.

Garden Club member Jason Eyster is leading the Club's efforts in planting the bed. It is the Club's intention that it be a community project both in its creation and in its sustenance. To that end they are soliciting the donation of annual and perennial plants and flower bulbs from Garden Club members, local merchants, and area residents. Because most perennials must be routinely divided, local gardeners will likely be able to donate plants out of their own gardens.

"Our goal," said Eyster, "is to obtain plants from as many people as

possible. We are therefore asking for just a few plants from each person. In this way, the resulting floral display will truly reflect our community."

The long-term goal is the establishment of a perennial island bed with a changing pattern of blooms from April through October. Because the group is just beginning this month, however, they plan to add a large number of annuals this summer to provide a greater fullness until the perennials mature. They are therefore accepting both annuals and perennials this spring. Any flower color is welcome, they add, except yellow or orange.

Anyone having perennials or annuals to donate may call 475-2156 to arrange pick-up. In addition, a Garden Club member can generally be found at the planter next to the post office every Thursday afternoon at 2 p.m.

## Spec. Daniel Ford Completes Army's Wire Installer Course

Army Reserve Spec. Daniel L. Ford has completed the wire systems installer course at Fort Gordon, Augusta, Ga.

The course provided instruction for soldiers to install, operate, and perform operator and organizational maintenance checks and services on voltage and current protection devices, telephones and auxiliary equipment.

He is the son of Edna C. and Ted Hipp of 19816 Ivey Rd., Chelsea.

The specialist is a 1984 graduate of Farmington High school.

## Area Physician Elected To Academy Fellowship

Brian J. Kennedy, M.D., of Chelsea, was recently elected to fellowship in the American Academy of Pediatrics.

To qualify as a fellow of the Academy, a pediatrician must be certified as a fully-qualified specialist in the field of child health.

The American Academy of Pediatrics is an organization of 43,000 pediatricians dedicated to the health, safety and well-being of infants, children, adolescents and young adults.

## Authority Hires First Manager

Jeffrey Bagocius of Leslie was approved last week as the first manager and paid employee of the Western Washtenaw Recycling Authority.

Bagocius, a former Leslie police chief, began work this week. He is expected to set up a temporary office in Sylvan Town Hall.

Bagocius was hired at a salary of \$28,000 plus benefits. He will manage the day-to-day operations of the recycling program, as well as help get all the pieces in place for a September start date.

In other business, the authority also approved bids for the materials recovery center at the village landfill on Werkner Rd., the bailer, bins, and related equipment.

Members of the authority include the villages of Chelsea and Manchester, and the townships of Sylvan, Dexter, Lima, Lyndon, Bridgewater, and Manchester.



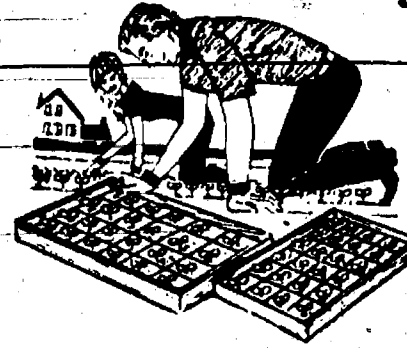
**RON JOSEPH**, maintenance supervisor for Chelsea schools, was presented an Exemplary Employee Award at a luncheon last Wednesday, May 27. Anne Comeau, school board president, made the presentation.

**THE NATIONAL KIDNEY FOUNDATION, INC.**

*\* REMEMBER TO SIGN AN ORGAN DONOR CARD AND TELL YOUR FAMILY OR LOVED ONES!*

Standard Want Ads Get Quick Results!

## There's Still Time To Create A Beautiful Flower & Vegetable Garden



- Vegetable Plants
- Melons • Squash
- Cucumbers

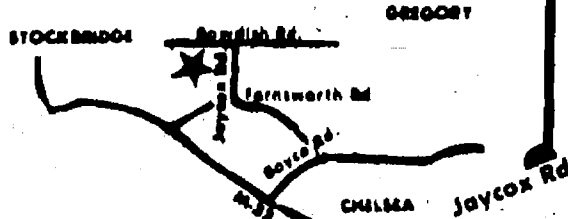
- Hybrid Tomato Plants
- Pansies
- Many more
- Flowering Annuals

Specials throughout the Greenhouse  
Open 7 days: 8 a.m.-8 p.m.  
15 beautiful minutes from Chelsea



## Kaiser's Greenhouse

12700 Jaycox Rd.  
Stockbridge  
(517)851-8745



Over 19 Years of Satisfied Customers

**DON POPPENGER**

Used Car Sales  
**PALMER MOTOR SALES**

475-1800  
475-3650

See Don for Your Next New or Used, Car or Truck.  
You'll be happy you did!

**GIVE BLOOD, PLEASE.**

American Red Cross

## JOHNSON'S HOW-TO TRADE-IN SALE

### Used Lawn & Garden Equipment

ALL LAWN MOWERS—Push and Self-Propelled  
TRACTORS—Lawn & Garden, 8-14 h.p.  
TILLERS — CHAIN SAWS — STRING TRIMMERS  
GARDEN SPRAYERS — LAWN VACUUMS

**All Reconditioned & Ready To Use**  
**ALL PRICED FOR QUICK SALE**  
**No Reasonable Offer Refused**

## JOHNSON'S HOW-TO LAWN & GARDEN Service station

110 N. Main St.  
Chelsea  
Ph. 475-7472

Open Mon.-Fri., 8-8. Sat., 8-5. Sun., 10-2

# MAYTAG SALE

FACTORY DIRECT

BIG SAVINGS ON ALL MAYTAGS!

America's No. 1 Preferred Washer and Dryer

LIMITED 10 YEAR WASHER TRANSMISSION WARRANTY

**DEPENDABLE MAYTAG WASHERS**

- Lasts longer, needs fewer repairs and costs less to service
- Porcelain enamel top
- Heavy duty
- Large capacity

**DEPENDABLE MAYTAG DRYERS**

- Dependability proven in commercial laundries
- All fabric drying
- Porcelain enamel top

# SALE

**HEYDLAUFF'S**  
APPLIANCES & ELECTRONICS

113 NORTH MAIN STREET in DOWNTOWN CHELSEA. 313 / 475-1221